



Kowa Collection

Decorative Modern

www.kowacollection.com

Feel the difference

窯元  築窯 1959年



Head Office

6-29, Nishiki 3-Chome, Naka-Ku, Nagoya, 460-8625, JAPAN
TEL: +81-52-963-3091 FAX: +81-52-963-3093
E-MAIL: kenzai@kowa.co.jp



Kowa Europe GmbH

Immermannstrasse 43B, 40210 Duesseldorf, F.R. GERMANY
TEL: +49-211-179354-0 FAX: +49-211-161952
E-MAIL: info-baustoff@kowaeurope.de



Kowa Europe GmbH Paris Liaison Office

2 Rue de l'Oratoire, 75001 Paris, FRANCE
TEL: +33-1-42860517 FAX: +33-1-42860513
E-MAIL: info-baustoff@kowaeurope.de



Kowa Europe GmbH Milan Liaison Office

Via Camperio 9, 20123 Milan, ITALY
TEL: +39-02-8056062 FAX: +39-02-8054629
E-MAIL: info-baustoff@kowaeurope.de



Kowa American Corp.

E55 59th Street Suite 19A, New York NY 10022, U.S.A.
TEL: +1-212-303-7800 FAX: +1-212-310-0101



Kochi S.A

Augusto Leguia Sur 160, Oficina 82, Las Condes, Santiago, CHILE
TEL: +56-2-378-5295 FAX: +56-2-378-5292



Kowa Asia Ltd.

Rm 903, 9F, Admiralty Centre Tower 1, 18 Harcourt Rd., Central, Hong Kong
TEL: +852-2520-2270 FAX: +852-2529-7714



Kowa (Shanghai) Co., Ltd.

Rm 3001-3008, Ruffles City Shanghai (Office Tower), 268
Xi Zang Road Central, Huangqu District, 200001 Shanghai, CHINA
TEL: +86-21-6340-3802 FAX: +86-21-6340-3806



Kowa Company, Ltd. Beijing Office

Rm 14, 12F, Office Tower 2, Henderson Center, 18 Jianguomennei Dajie,
Dongcheng District, 100005 Beijing, CHINA
TEL: +86-10-6518-2101 FAX: +86-10-6518-2108



Kowa South East Asia Pte,Ltd.

10 Anson Road, No.19-15, International Plaza, 079903 SINGAPORE
TEL: +65-6220-1755 FAX: +65-6225-6249



Kowa India Pvt,Ltd.

408, Town Centre, Andheri Kurla Road, Marol Andheri (East), Mumbai 400 059, INDIA
TEL: +91-22-28509695 FAX: +91-22-28596688



Kowa Company, Ltd. Middle East Office

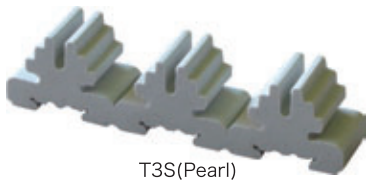
Dubai Airport Free Zone, 4EB No.146, P.O.Box 54841, Dubai, U.A.E.
TEL: +971-4-6091191 FAX: +971-4-6091194



Porous model 1

INTERNATIONAL CERAMICS COMPETITION
MINO, JAPAN GOLD AWARDS

wall type



T3S(Pearl)

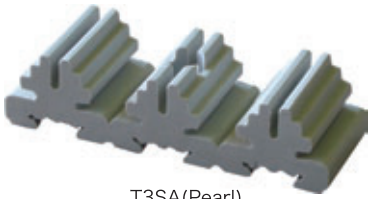


T3H(Sand)



T3W(Snow)

self-standing type



T3SA(Pearl)

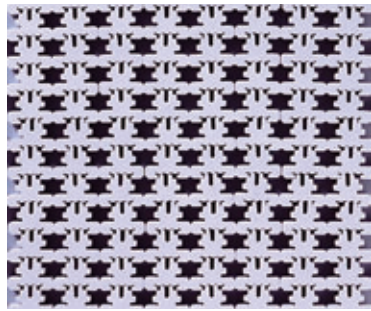


T3HA(Sand)

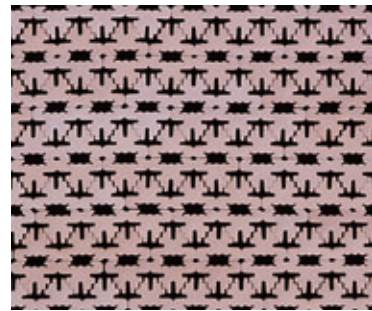


T3WA(Snow)

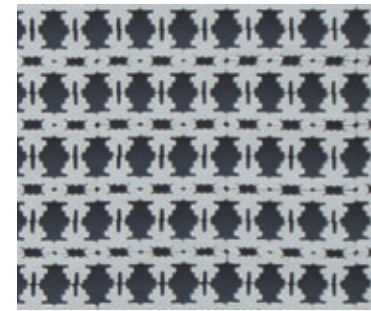
arrangement



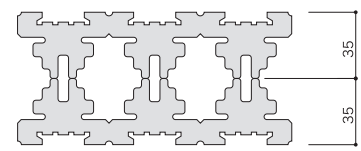
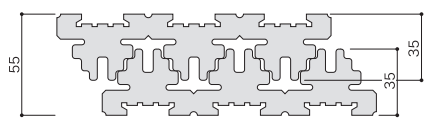
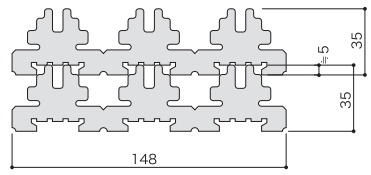
pattern A



pattern B

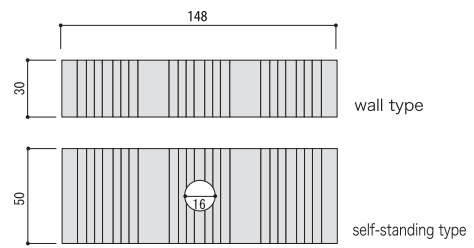


pattern C



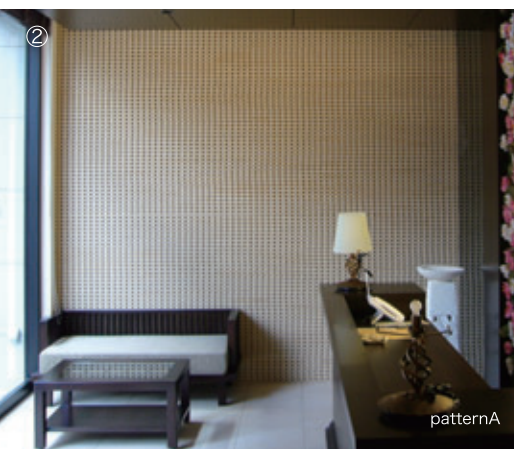
Porous model 1

type	NO.	color	pcs/m ²	size (LxWxT mm)	weight/pc
wall type	T3S	(Pearl)	patternA 226	148x35x30	170g
	T3H	(Sand)			
	T3W	(Snow)			
self-standing type	T3SA	(Pearl)	patternA 226	148x35x50	300g
	T3HA	(Sand)			
	T3WA	(Snow)			



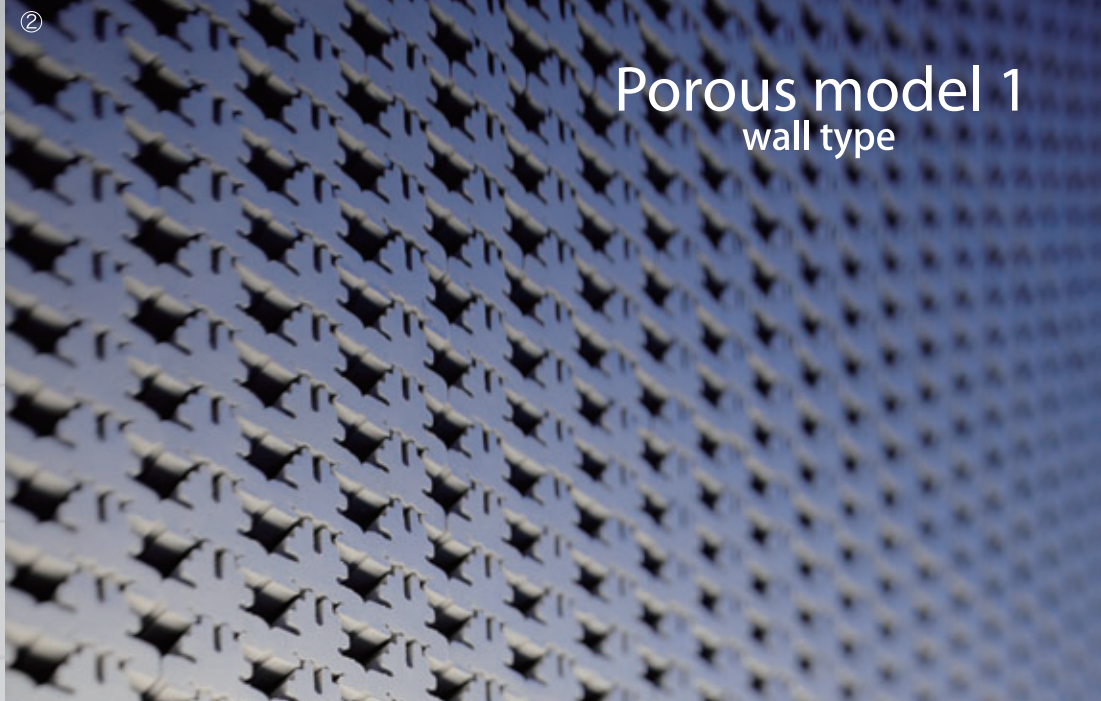
■Ceramic product has individual differences, such as size and color shape.

INTERNATIONAL
CERAMICS
COMPETITION
MINO JAPAN
GOLD AWARDS



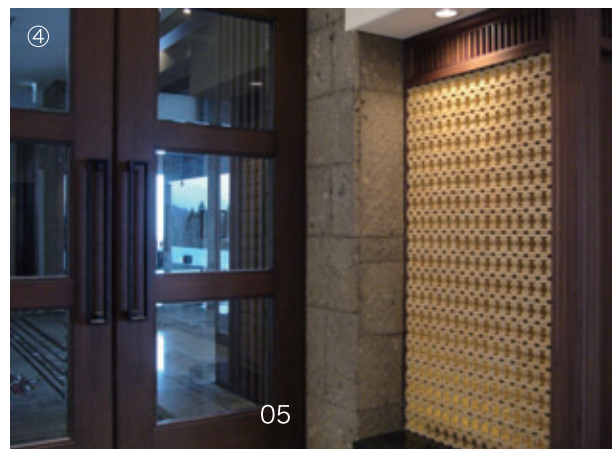
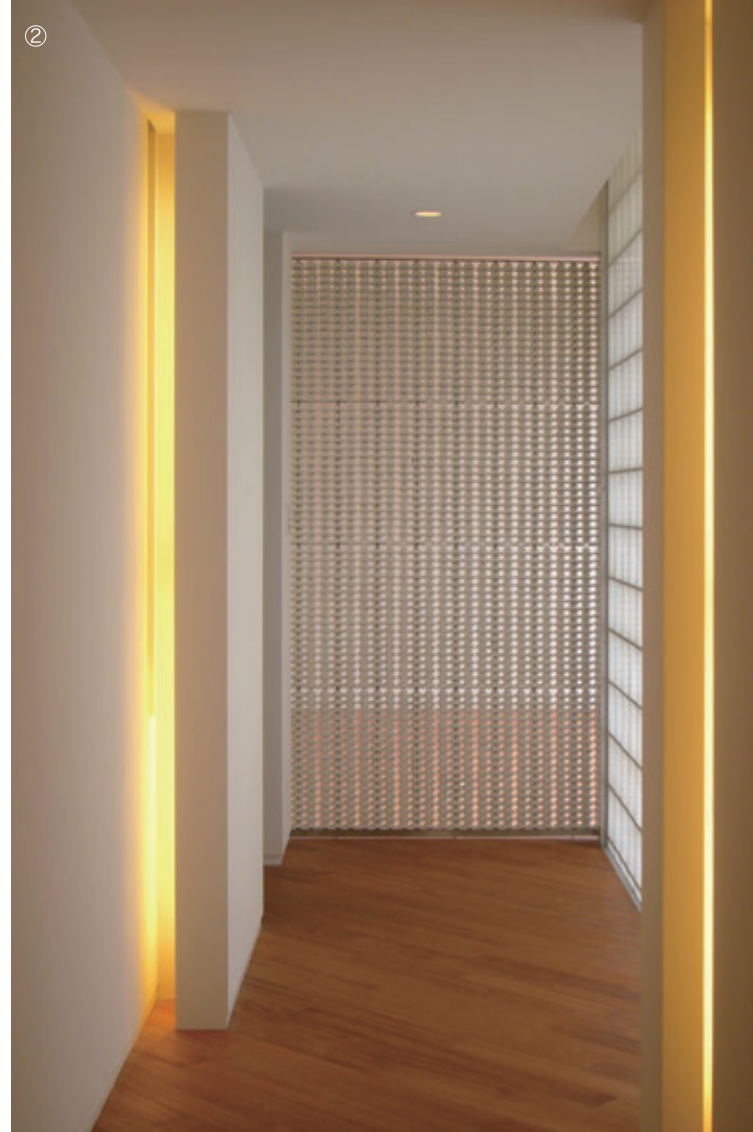
Porous model 1 wall type





② Porous model 1
wall type





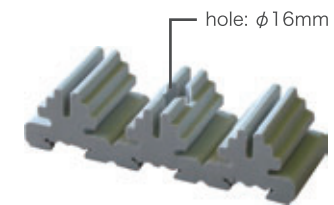
Porous model 1

self-standing type





Porous model 1 self-standing type



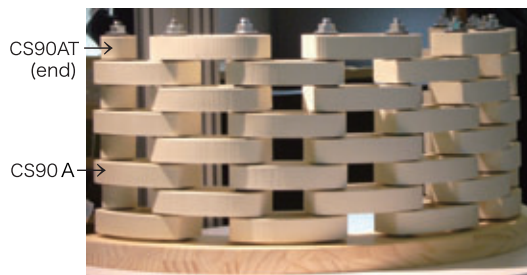
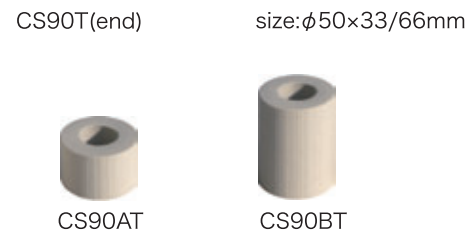
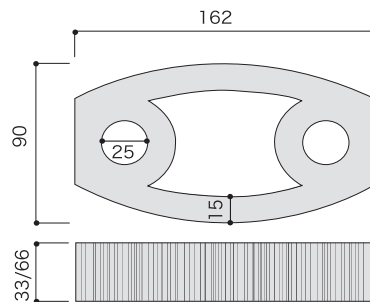
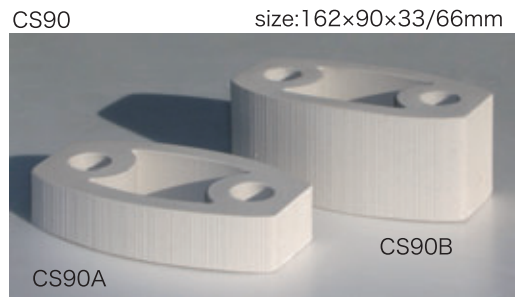
self-standing type

Installation Advice P55-56



Ceramic screen



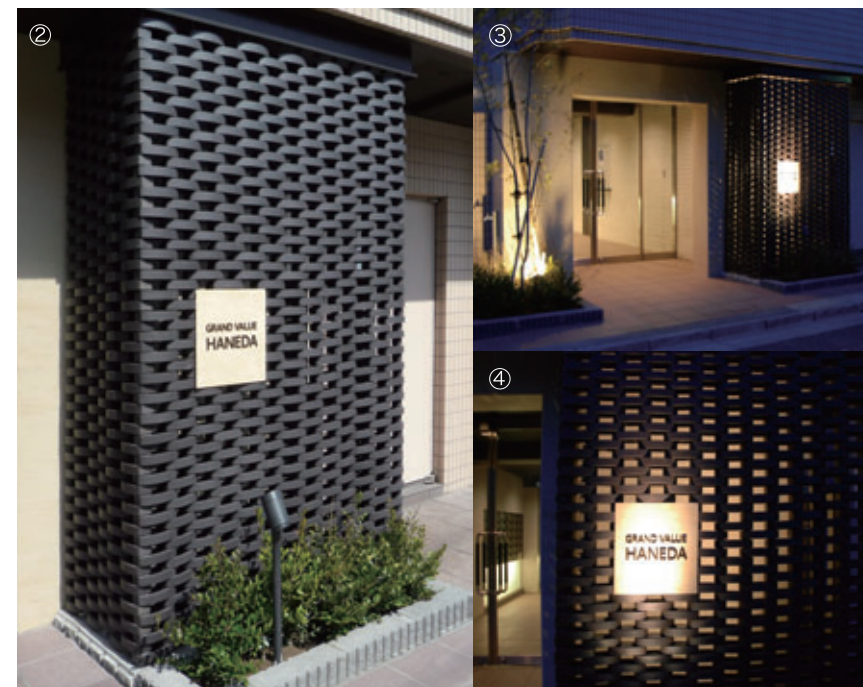


Installation Advice P57-58

Ceramic screen

NO.	color	pcs/m ²	size (L×W×T mm)	weight/pc
CS90 A	Pearl·Sand·Snow	140	162×90×33	600g
CS90 B			162×90×66	1150g
CS90AT(end)		$\phi 50 \times 33$	120g	
CS90BT(end)		$\phi 50 \times 66$	240g	

■Ceramic product has individual differences, such as size and color shape.
 ■Adjust size difference during installation. ■Buffers are attached to the tiles.



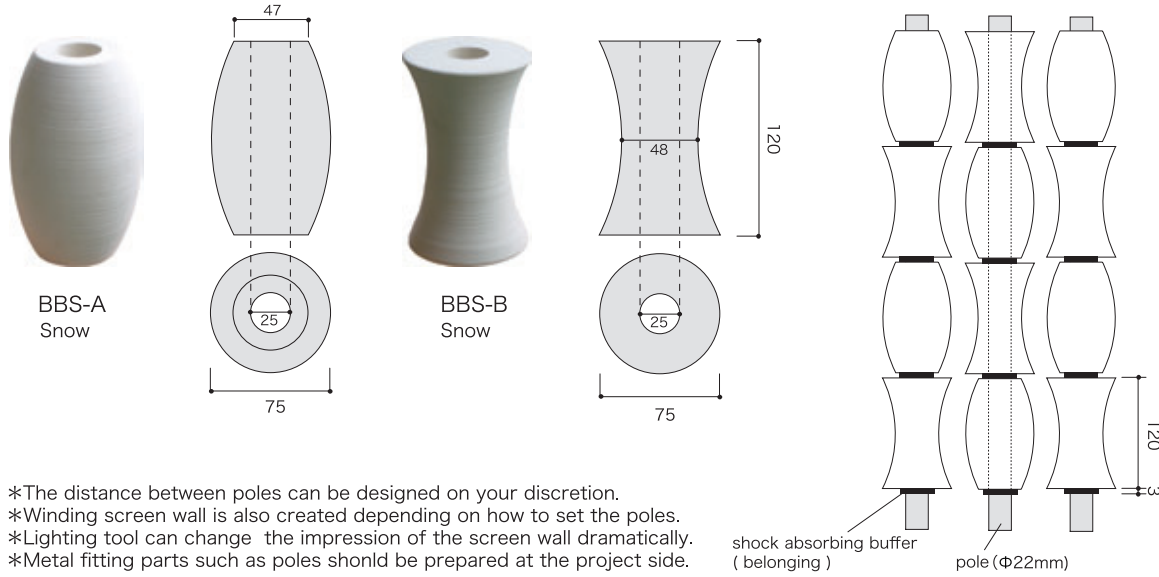
GRAND VALLE HANEDA / 設計 シマダアセットパートナーズ株式会社

Charcoal(special order)



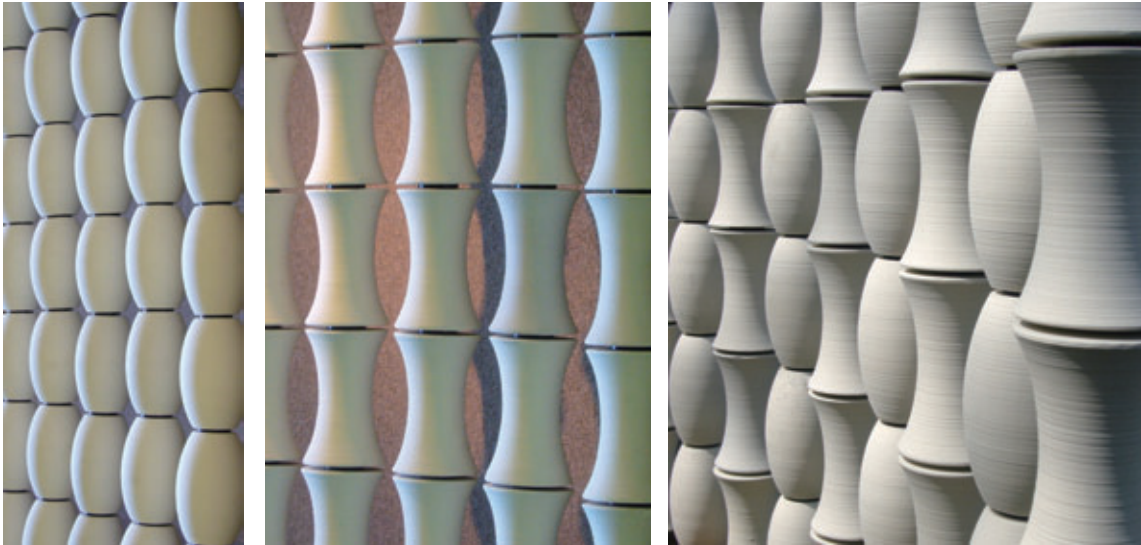
Bamboo screen

size : $\Phi 75 \times 120$ mm



- *The distance between poles can be designed on your discretion.
- *Winding screen wall is also created depending on how to set the poles.
- *Lighting tool can change the impression of the screen wall dramatically.
- *Metal fitting parts such as poles should be prepared at the project side.

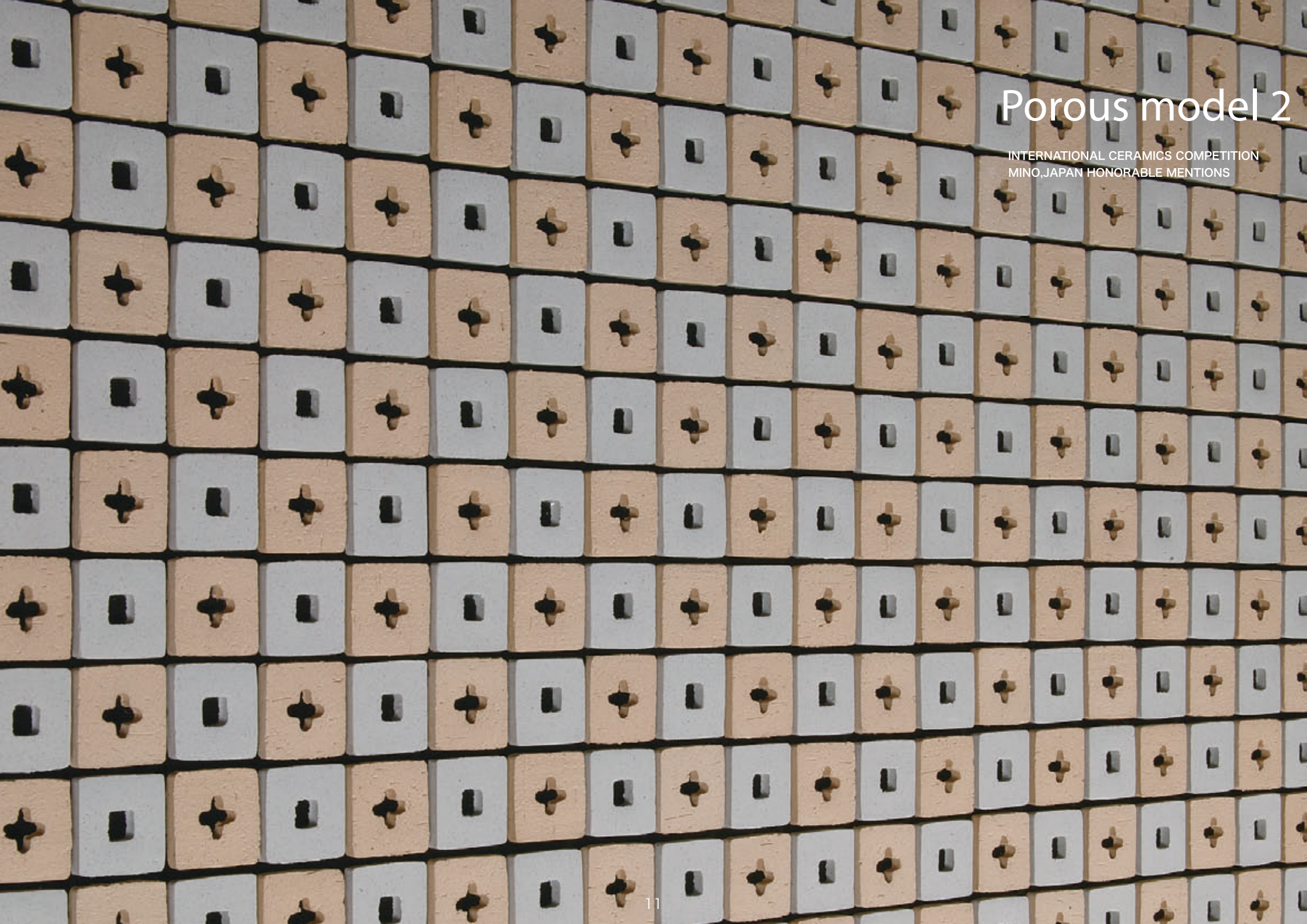
shock absorbing buffer (belonging)
pole ($\Phi 22$ mm)



Bamboo screen

NO.	color	pcs/m	size (LxWxT mm)	weight/pc
BBS-A	Snow	8.2	$\Phi 75 \times 120$	750g
BBS-B			$\Phi 75 \times 120$	540g

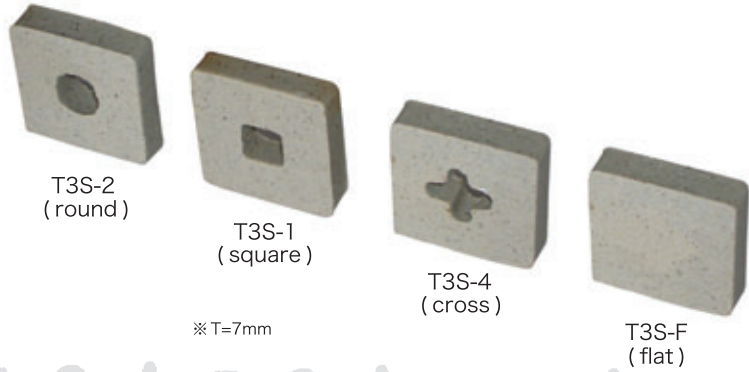
- Ceramic product has individual differences, such as size and color shape.
- Adjust size difference during installation. ■ Buffers are attached to the tiles.



Porous model 2

INTERNATIONAL CERAMICS COMPETITION
MINO, JAPAN HONORABLE MENTIONS

size:30×30×T7mm·20mm



※T=7mm

T3S-F
(flat)

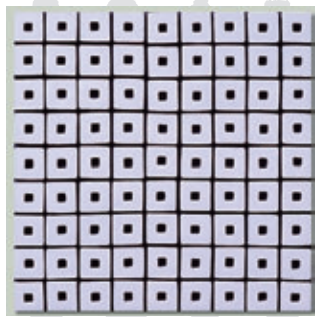
size:30×30×T7mm·20mm



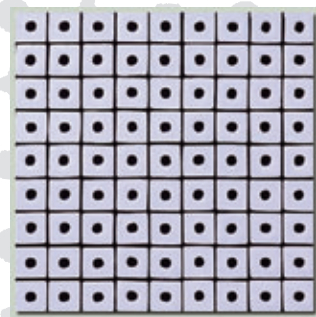
※T=20mm

T3H-F
(flat)

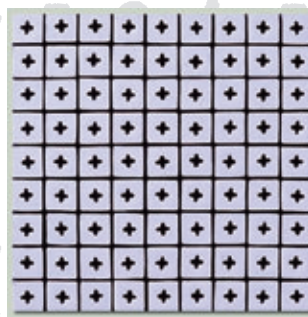
arrangement



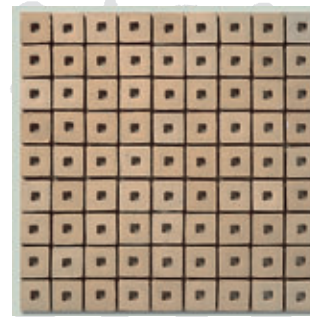
T3S-1



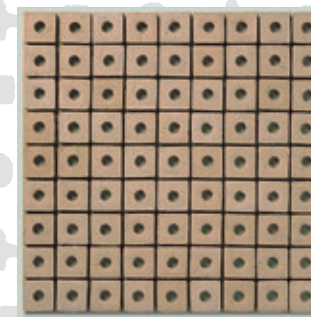
T3S-2



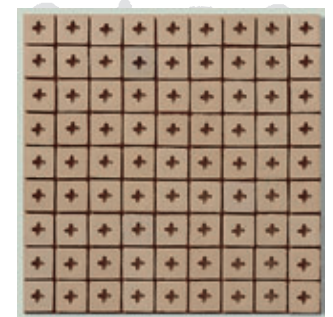
T3S-4



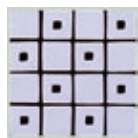
T3H-1



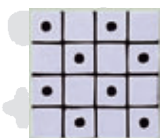
T3H-2



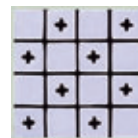
T3H-4



T3S-1F



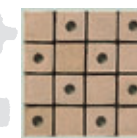
T3S-2F



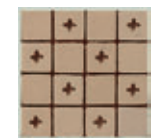
T3S-4F



T3H-1F



T3H-2F



T3H-4F

original point.1 Free combination between shapes (square, round, cross and flat) and colors (pearl and sand) is available by option.

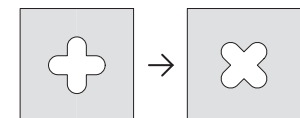
original point.2 Other shapes of hole are available by special order.

Porous model 2

NO.	color	sheet/m ²	size/sheet	size (L×W×T mm)	weight/sheet
T3S-1 T3S-2 T3S-4	Pearl	11sheet	300×300mm	30×30×7 30×30×20	T= 7mm 980g
T3H-1 T3H-2 T3H-4	Sand				T= 20mm 2840g
T3S-1F T3S-2F T3S-4F	Pearl				
T3H-1F T3H-2F T3H-4F	Sand				

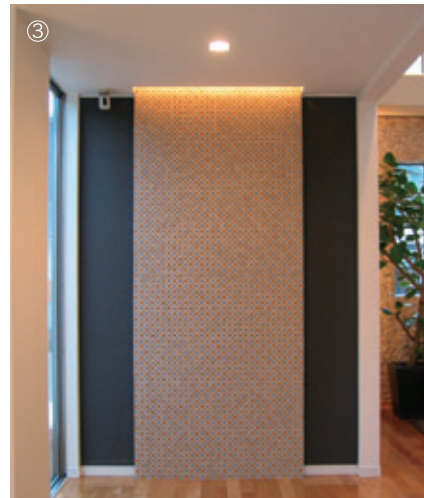
■Ceramic product has individual differences, such as size and color shape.

ex)





Porous model 2





銘菓処おもたせや／東京駅一番街おみやげプラザ



Porous model 2



Porous block 100

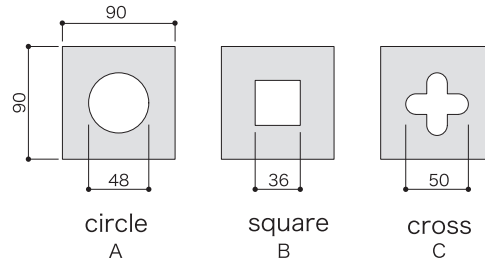
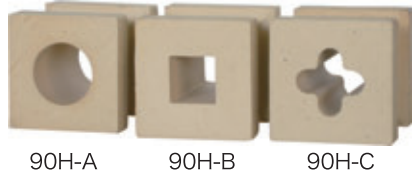


Diagonal lines are special order.

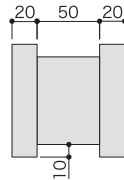
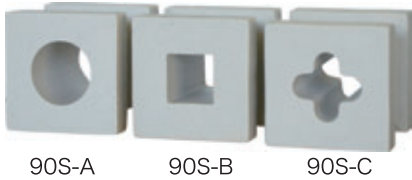
Porous block 100

size:90×90×T90mm

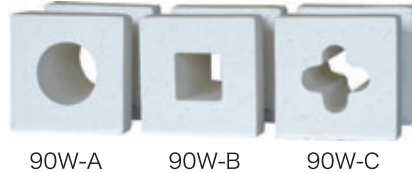
Sand



Pearl



Snow



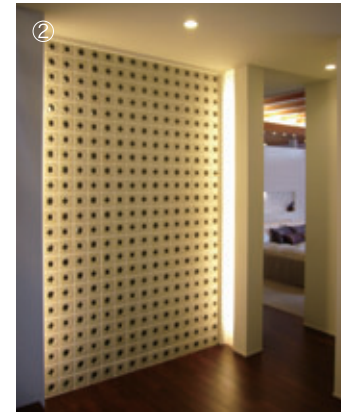
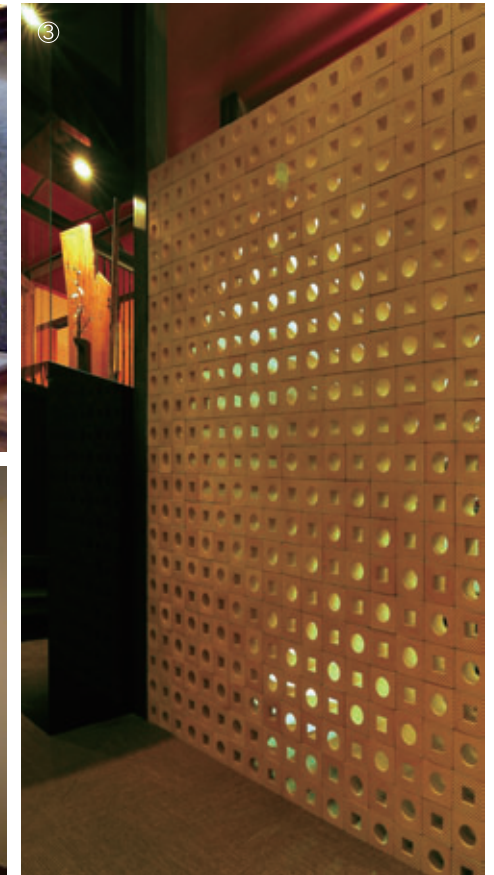
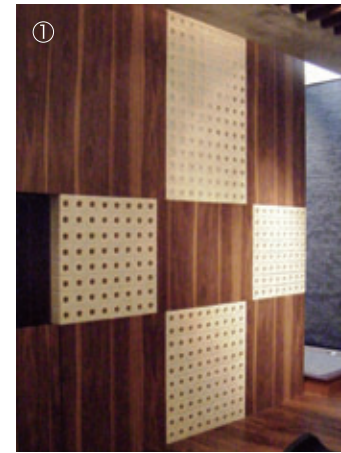
Diagonal lines are special order.

- original point
- Charcoal and other colors are available.

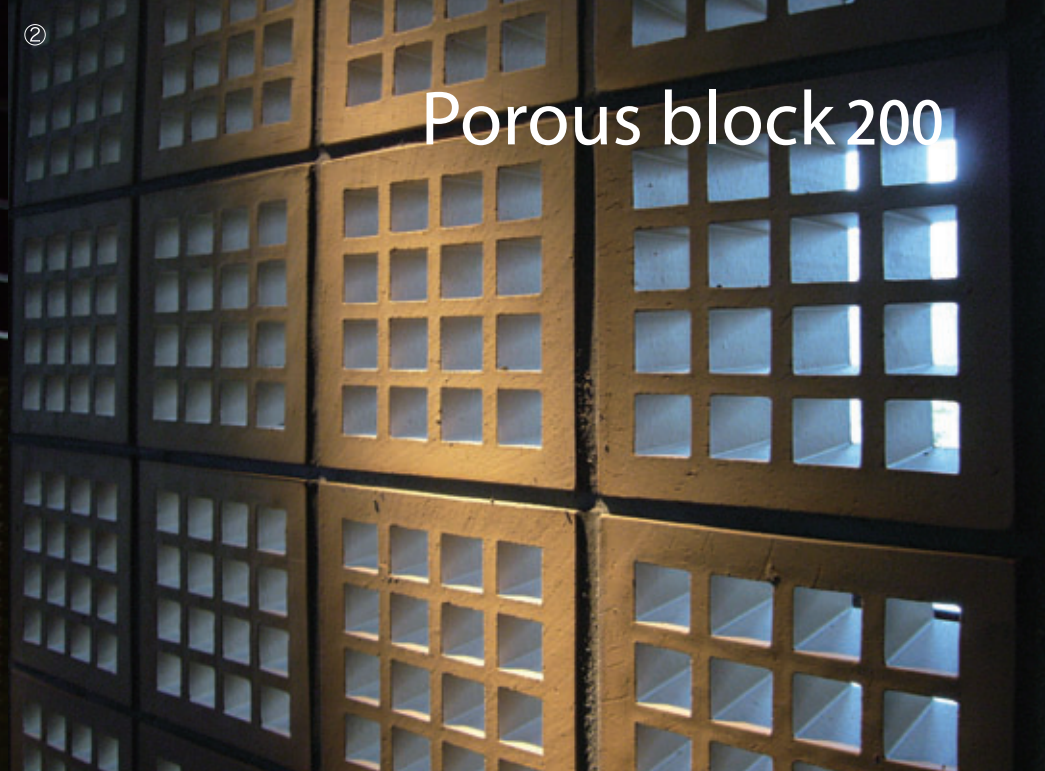
Porous block 100

NO.	color	pcs/m ²	size (L×W×T mm)	weight/pc
90S-A/B/C	Pearl	100	90x90x90	1000g
90H-A/B/C	Sand			
90W-A/B/C	Snow			

■Ceramic product has individual differences, such as size and color shape.



串焼き ひがし/設計施工 アーキテクトファミリー



Wall oribe

INTERNATIONAL CERAMICS COMPETITION
MINO, JAPAN HONORABLE MENTIONS



Porous block 200

Sand



190H



190HA



190HB

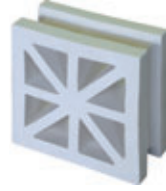


190HC

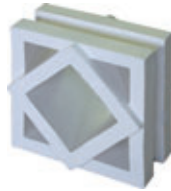
Snow



190W



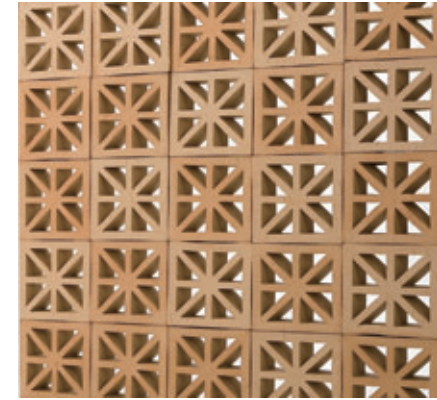
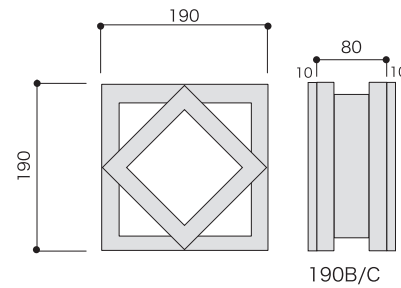
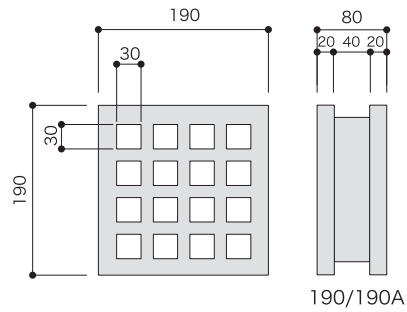
190WA



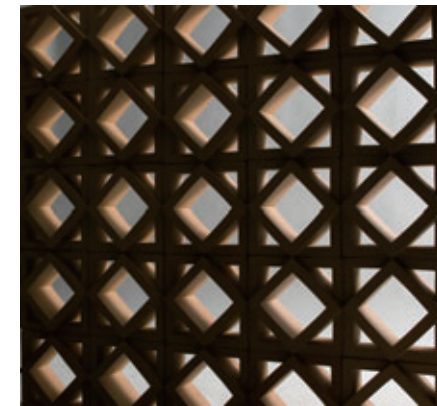
190WB



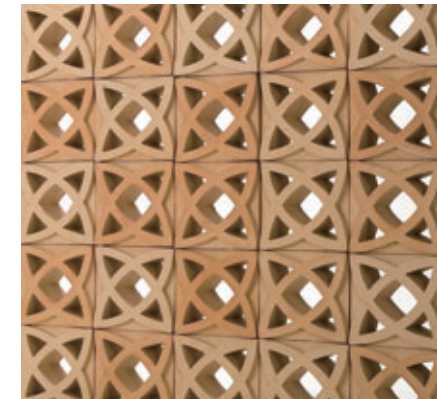
190WC



190HA



190HB



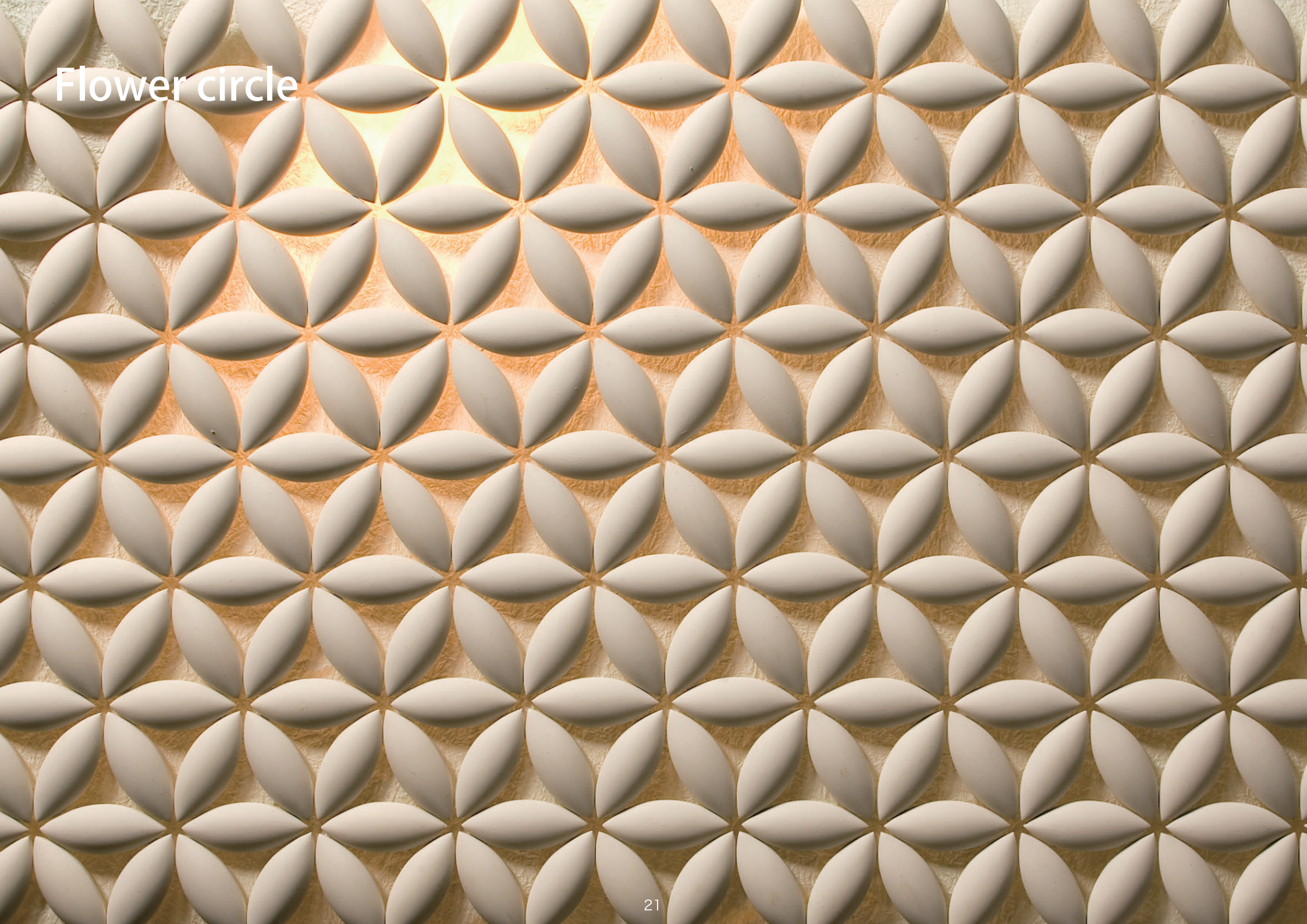
190HC

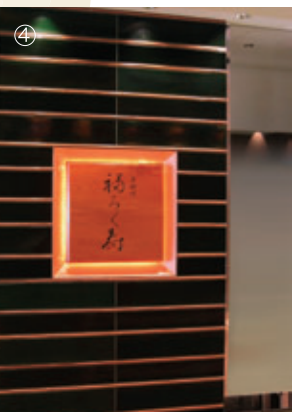
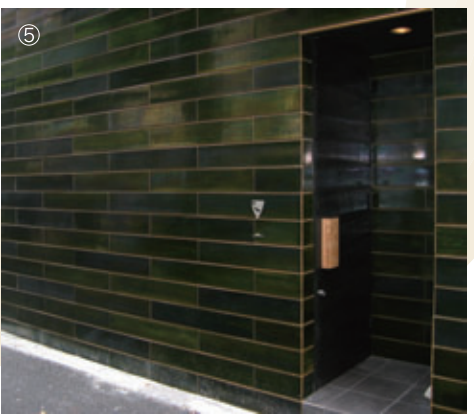
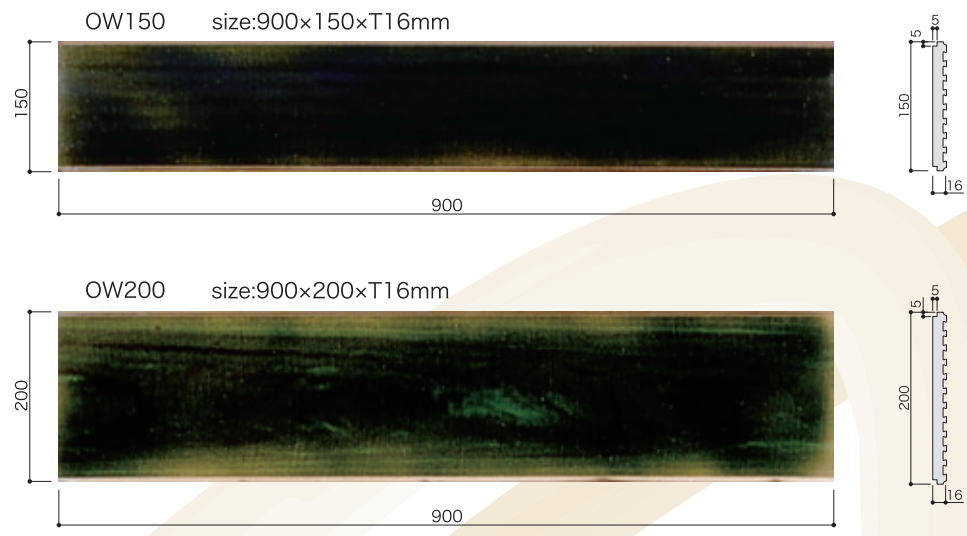
Porous block 200

NO.	color	pcs/m ²	size (LxWxT mm)	weight/pc
190	Sand Snow	25	190x190x80	3500g
190A			190x190x80	3500g
190B/C			190x190x100	3600g(B) 4500g(C)

■ Ceramic product has individual differences, such as size and color shape.

Flower circle





Wall oribe

NO.	color	pcs/m ²	size (LxWxT mm)	weight/pc
OW150	oribe	7.3	900x150x16	4150g
OW200		5.5	900x200x16	5300g

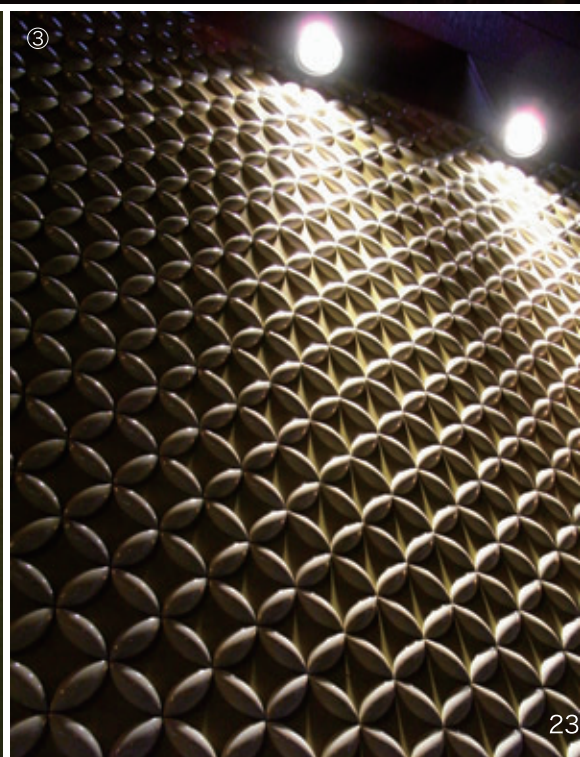
■Ceramic product has individual differences, such as size and color shape.

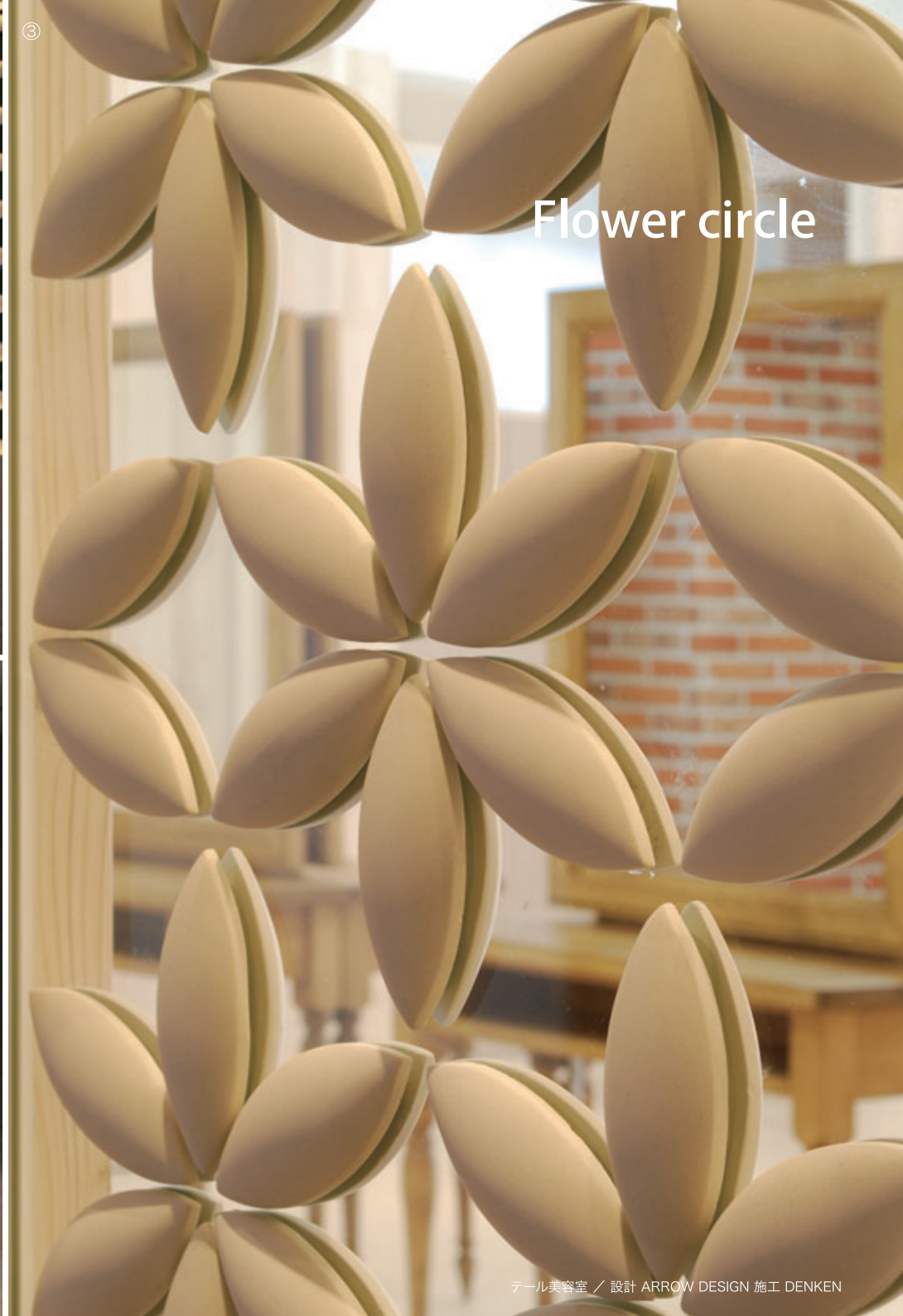
original point Other colors are available by special order.





Flower circle



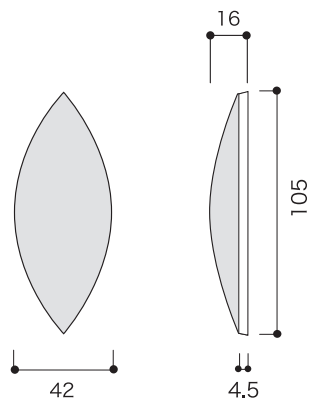


Flower circle

size:42×105×T16mm

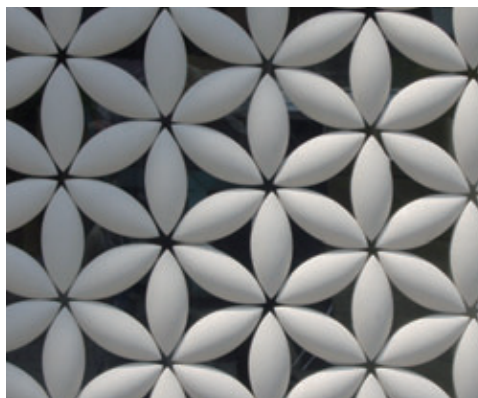


No.FCW Snow
No.FCS Silky White
No.FCT Crystal White
No.FCG Green Tea

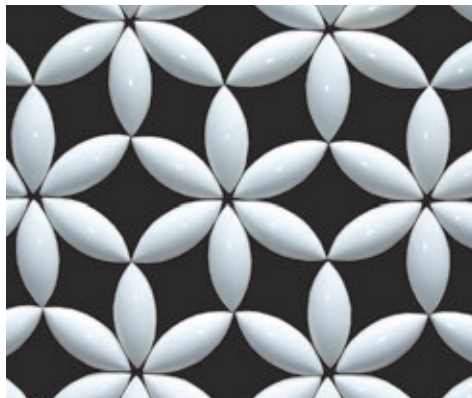


カブール 横浜店 / 設計施工 株式会社ハウハウス 丸栄

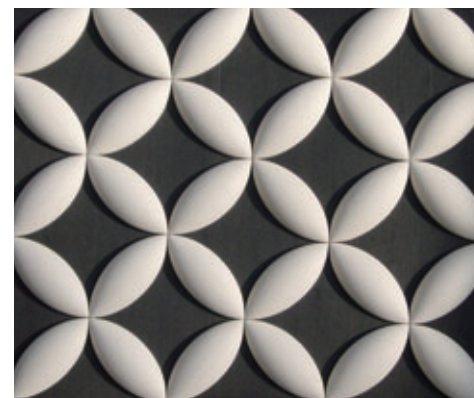
pattern A



pattern B



pattern C

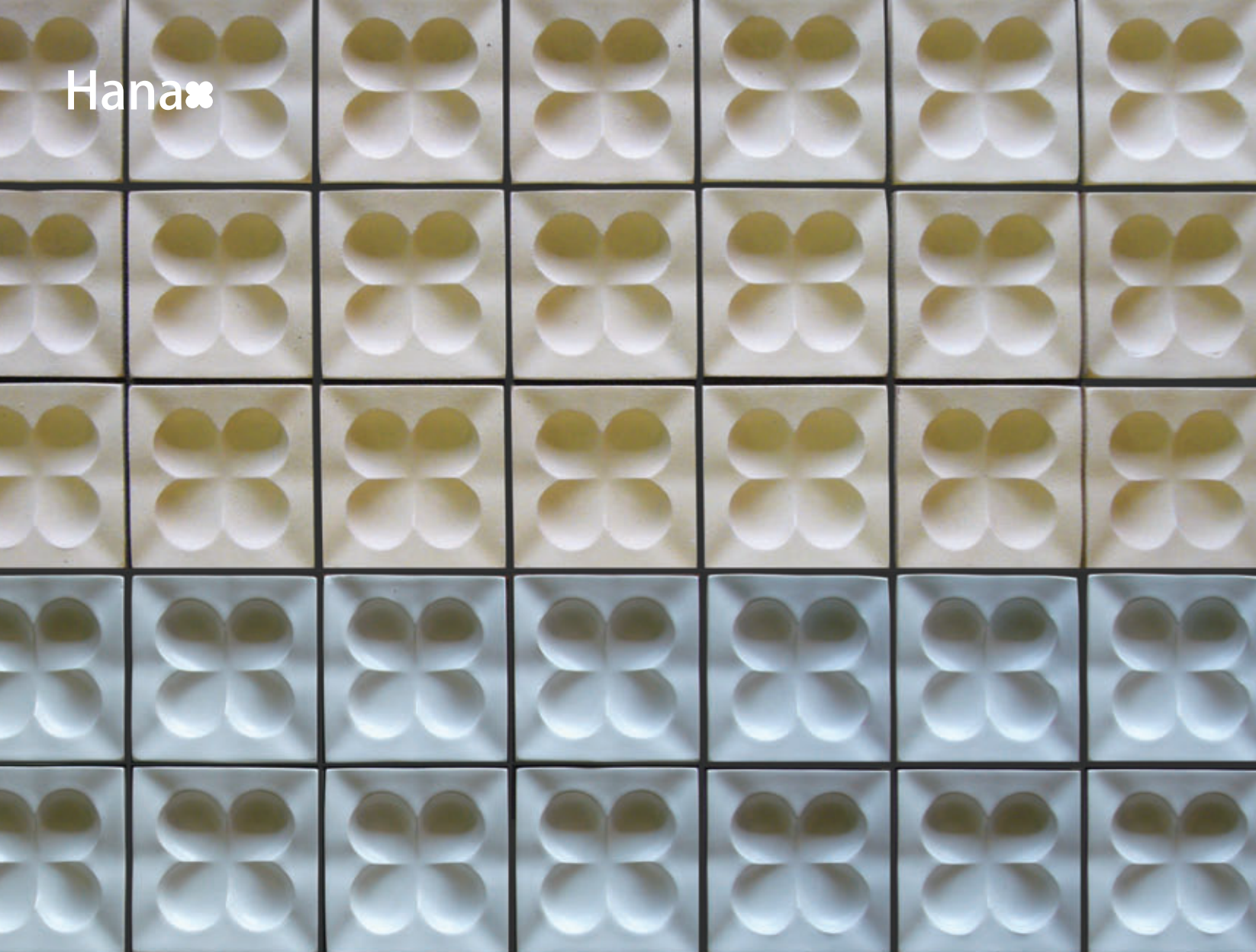


Flower circle

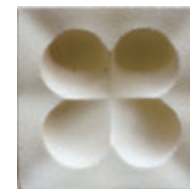
NO.	color	pcs/m ²	size (L×W×T mm)	weight/pc
FCW	Snow	patternA 251 patternB 180 patternC 176	42×105×16	70g
FCS	Silky White			
FCT	Crystal White			
FCG	Green Tea			

■ Ceramic product has individual differences, such as size and color shape.
 ■ Snow color should be careful of the dirt during the installation.

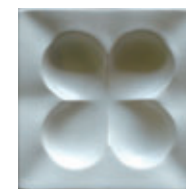
Hana ❀



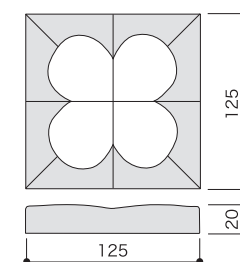
size:125×125×T20mm



87H Sand



87S Silky White



size : 90×90×16mm

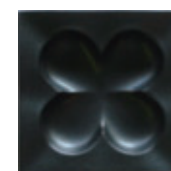
Hana

NO.	color	pcs/m ²	size (L×W×T mm)	weight/pc
87S	Silky White	60 (5mm joint)	125×125×20	500g
87H	Sand			

■Ceramic product has individual differences, such as size and color shape.

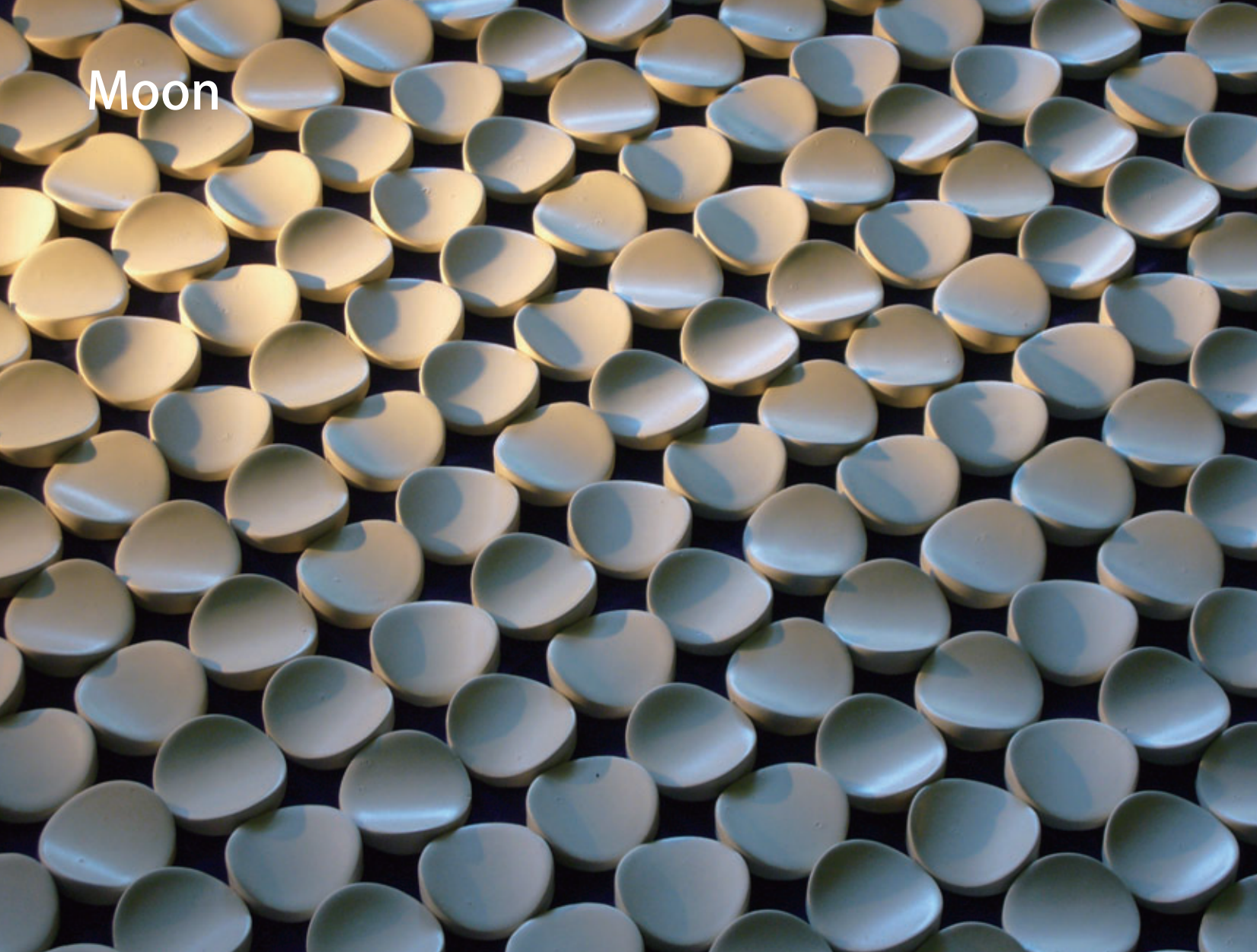
original point

Other colors are available by special order.

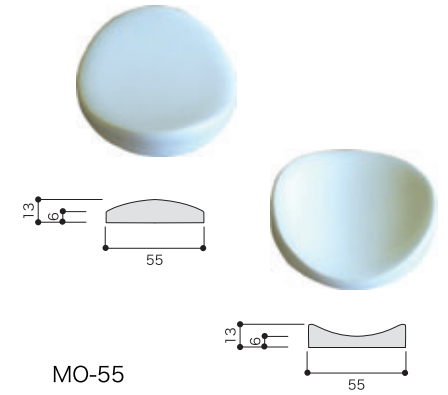


Charcoal

Moon



size: $\phi 55 \times T13$ mm



MO-55
Ivory White

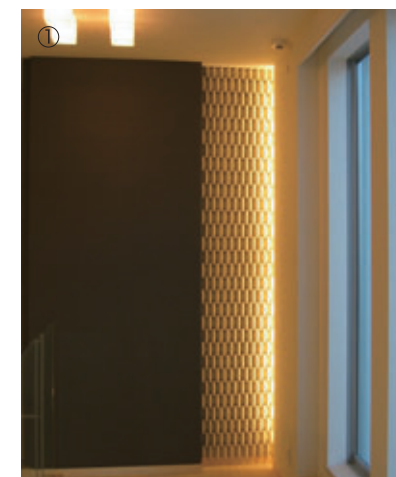
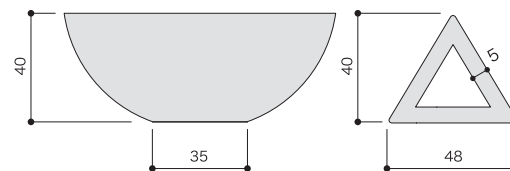
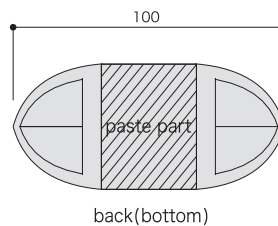


Moon

NO.	color	pcs/m ²	size (L×W×T mm)	weight/pc
MO-55	Ivory White	319(tight joint)	$\phi 55 \times 13$	44g
		297(3mm joint)		

■ Ceramic product has individual differences, such as size and color shape.

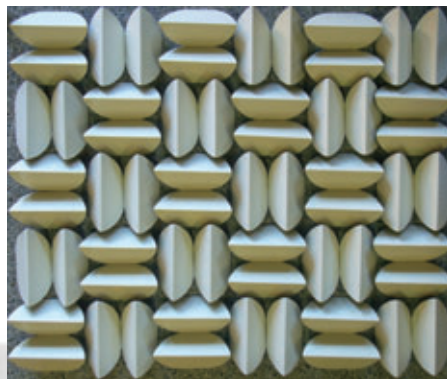
size:100x48xH40mm



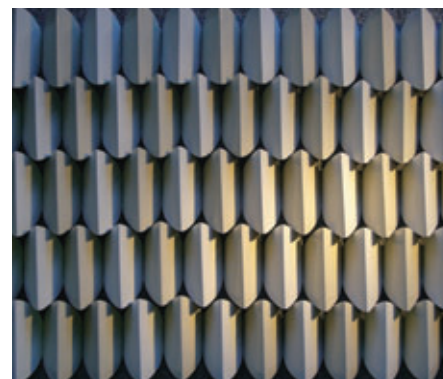
arrangement



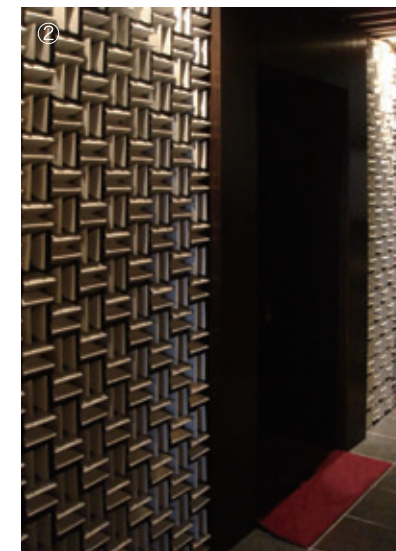
pattern A



pattern B



pattern C



Deco wall leaf

NO.	color	pcs/m ²	Size (L×W×T mm)	weight/pc
No.750	(Silky White) (Ivory)	pattern A 315	100x48x40	70g
		pattern B 306		
		pattern C 252		

■ Ceramic product has individual differences, such as size and color shape.



Deco wall leaf

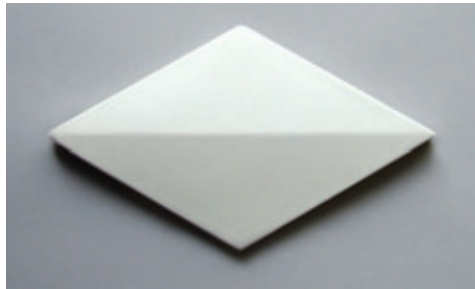
INTERNATIONAL CERAMICS COMPETITION
MINO, JAPAN BRONZE AWARDS

Hishigata





size:145×85×T15mm



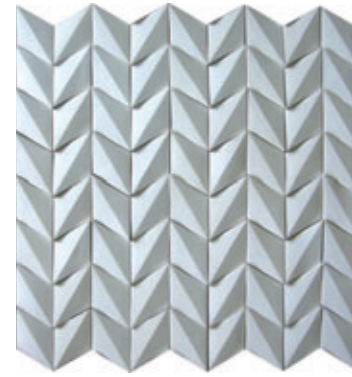
700H (Silky White)

Silky White

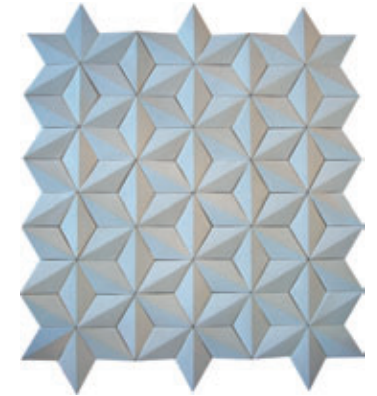


Charcoal

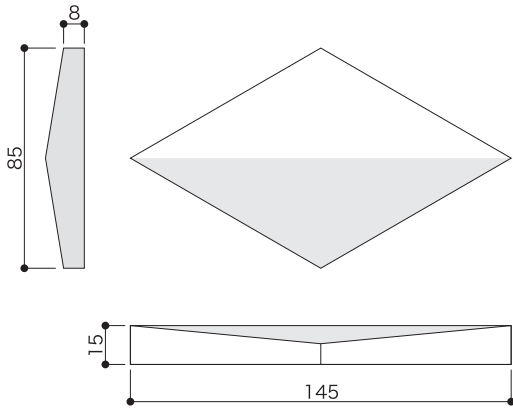
Persimmon



pattern A



pattern C

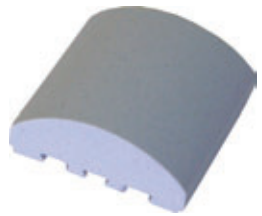


Hishigata

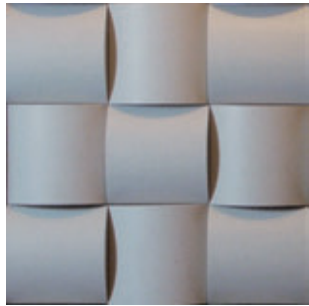
NO.	color	pcs/m ²	size (LxWxT mm)	weight/pc
700H	Silky White Charcoal Persimmon	162	145x85x15	150g

■Ceramic product has individual differences, such as size and color shape.

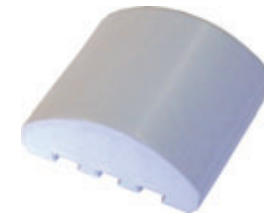
MA-A size:75×75×T30mm



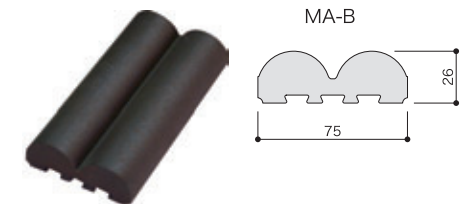
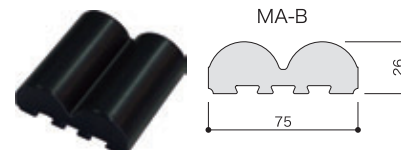
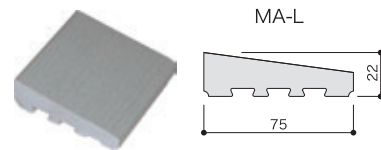
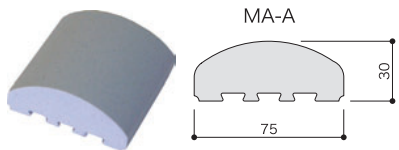
Pearl



Sand



Silky White



Ichimatsu

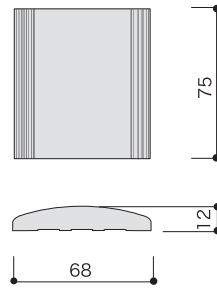
NO.	pcs/m ²	size (L×W×T mm)	weight/pc
MA-A	176	75x75x22~30	200g~300g
MA-B			
MA-L			

■Ceramic product has individual differences, such as size and color shape.

No.MA-NS Snow



size:75×68×T12mm



Ichimatsu nagashikaku

NO.	color	pcs/m ²	size (LxWxT mm)	weight/pc	size/sheet	weight/sheet
MA-NS	Snow	189	75×68×12	115g	293×293×12	1900g

- Ceramic product has individual differences, such as size and color shape.
- Snow color should be careful of the dirt during the installation.



Ichimatsu nagashikaku

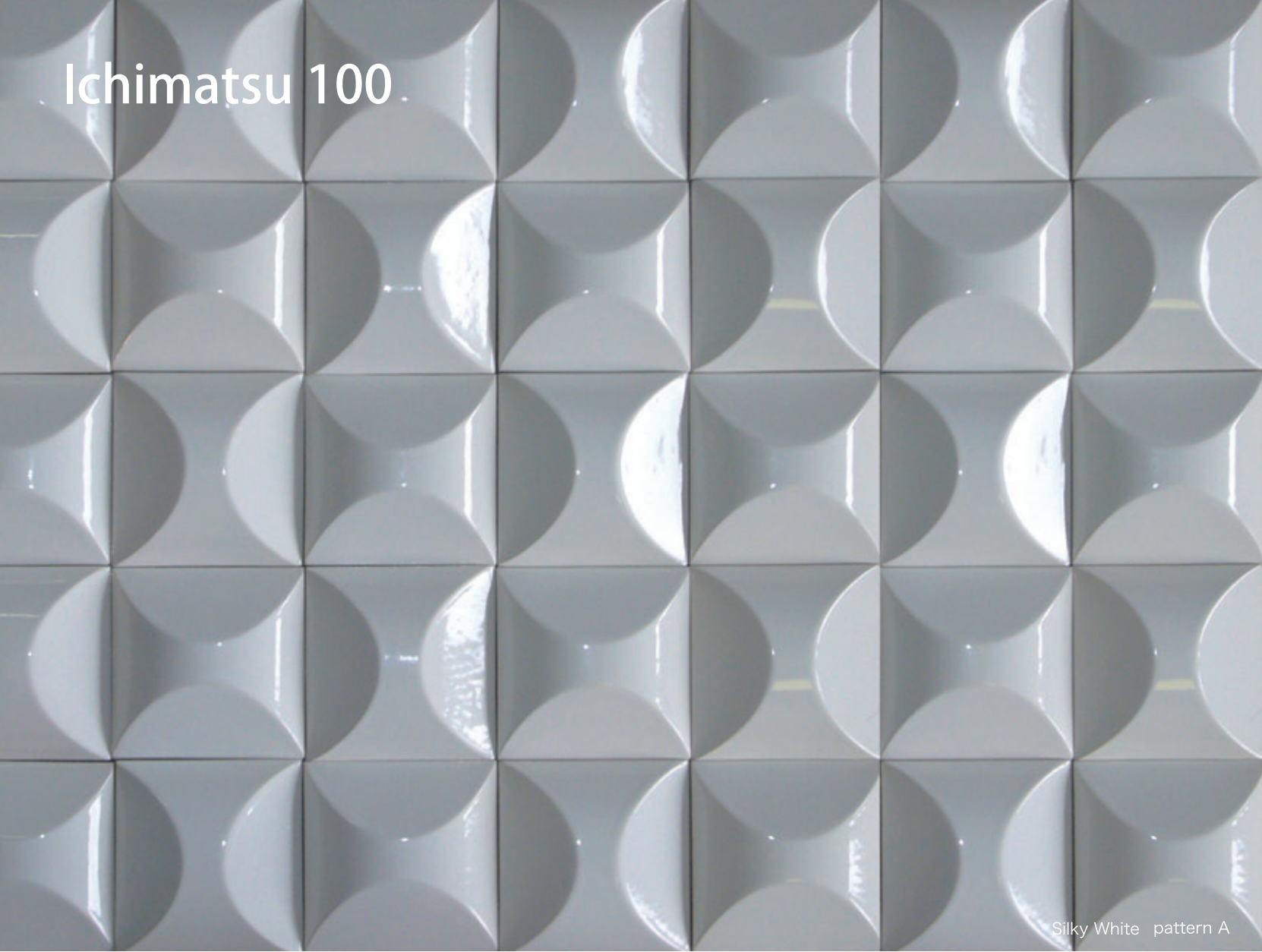
INTERNATIONAL CERAMICS COMPETITION
MINO, JAPAN HONORABLE MENTIONS

Ichimatsu 375

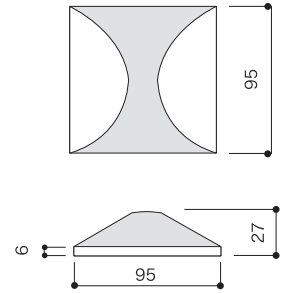
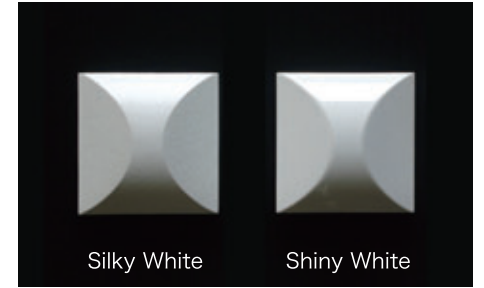
INTERNATIONAL CERAMICS COMPETITION
MINO, JAPAN HONORABLE MENTIONS



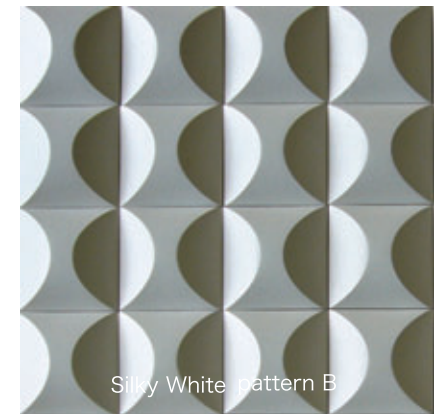
Ichimatsu 100



size:95×95×T27mm



Silky White pattern A



Silky White pattern B

Ichimatsu 100

NO.	color	pcs/m ²	size (L×W×T mm)	weight/pc
MA-100	Silky White Shiny White	100(5mm joint)	95×95×27	300g

■Ceramic product has individual differences, such as size and color shape.

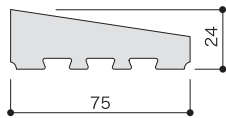


Charcoal (special order)

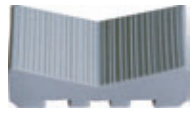
size:75×37.5×T24mm



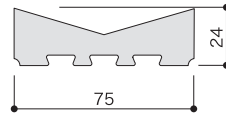
MA-L375



size:75×37.5×T24mm



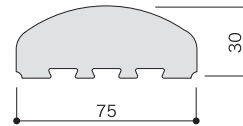
MA-O375



size:75×37.5×T30mm



MA-A375



MA-L375



MA-O375



MA-A375



Ichimatsu 375

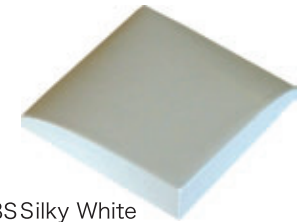
NO.	color	pcs/m ²	size (L×W×T, mm)	weight/pc
MA-A375	Pearl	352	75×37.5×30	150g
MA-L375			75×37.5×24	110g
MA-O375			75×37.5×24	105g

■Ceramic product has individual differences, such as size and color shape.

Round quarter



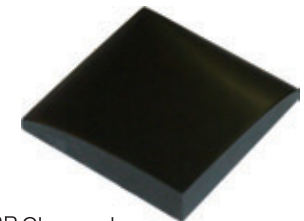
size:98×98×T22mm



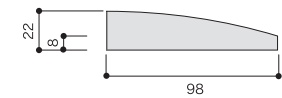
98S Silky White



98C Persimmon



98B Charcoal

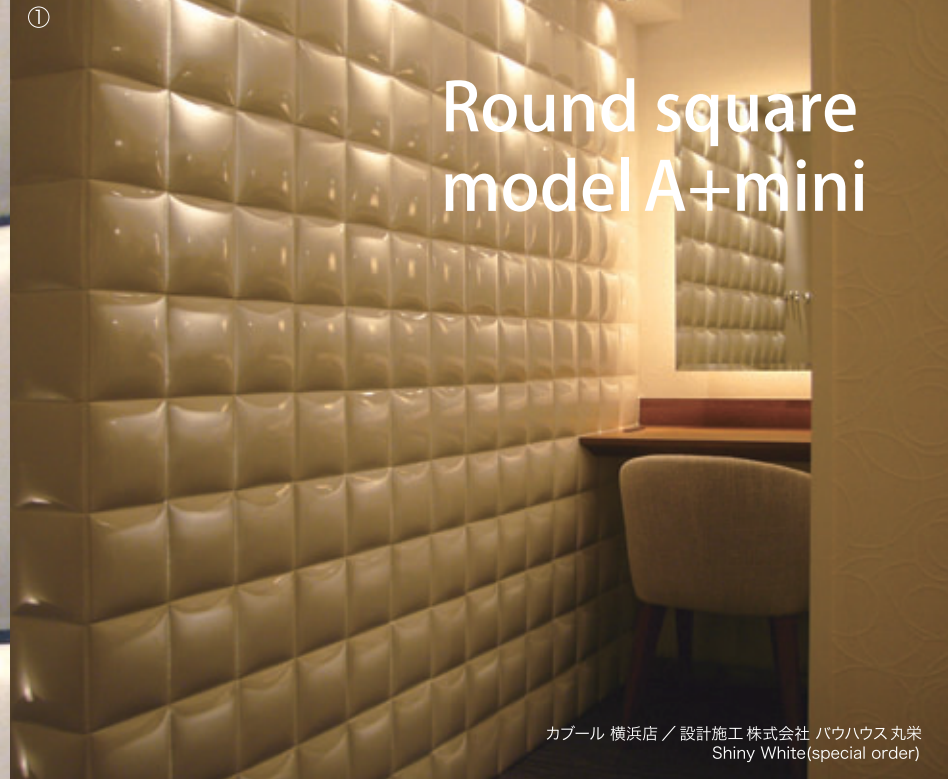
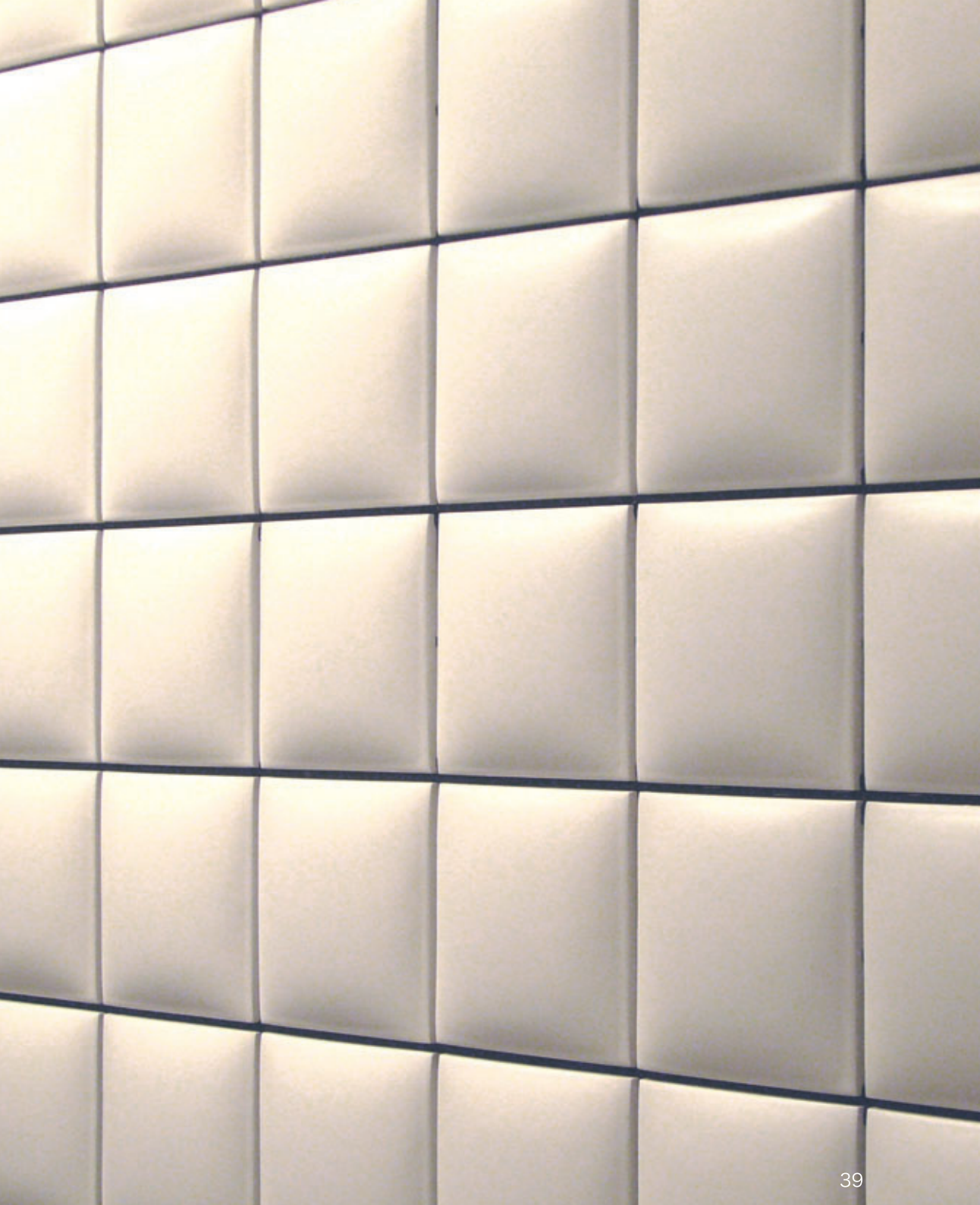


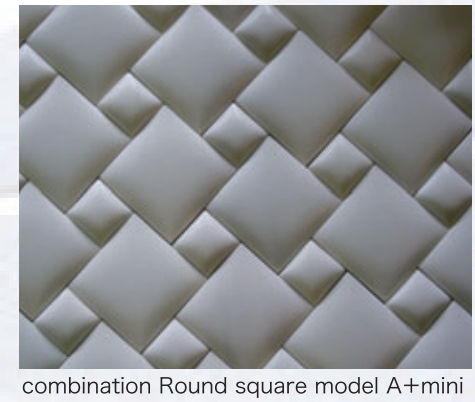
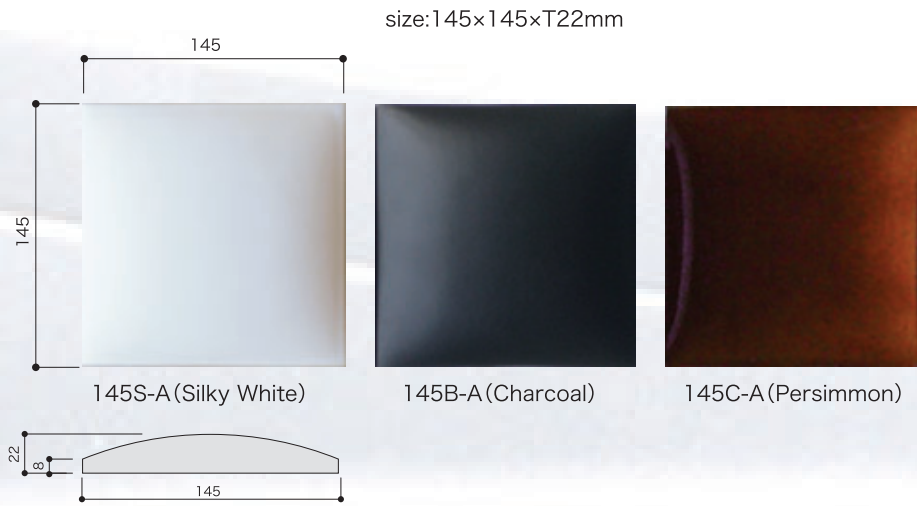
Round quarter

NO.	color	pcs/m ²	size (L×W×T mm)	weight/pc
98S	Silky White	100 (2mm joint)	98×98×22	400g
98B	Charcoal			
98C	Persimmon			

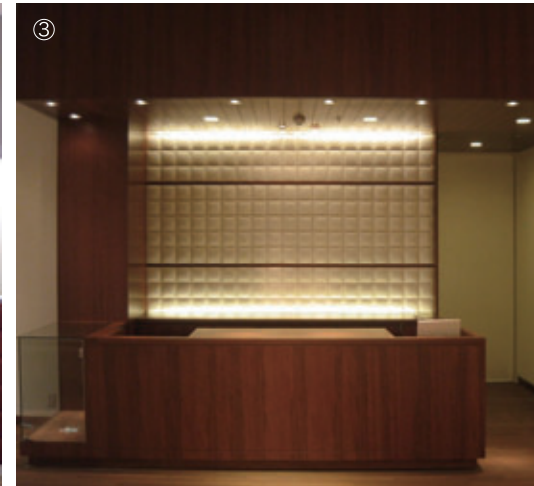
■ Ceramic product has individual differences, such as size and color shape.

original point Various expressions appear by different direction of installation.





Round square model A



Round square model A+mini



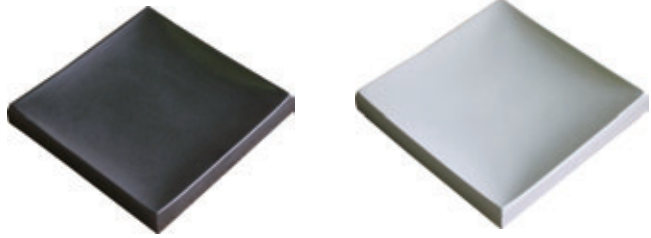
Round square model A+mini

NO.	/	color	pcs/m ²	size (L×W×T mm)	weight/pc	
145S-A	Silky White	145B-A Charcoal	145C-A Persimmon	43.5 (5mm joint)	145×145×22	700g
72S	Silky White	72B Charcoal	72C Persimmon	176 (3mm joint)	72×72×22	165g

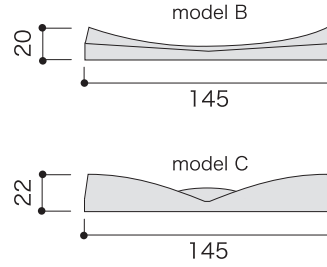
■Ceramic product has individual differences, such as size and color shape.

Round square
model B . C

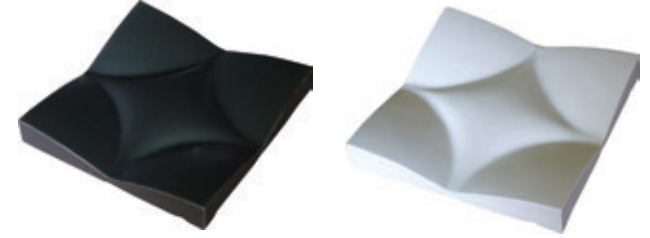
size:145×145×T20mm



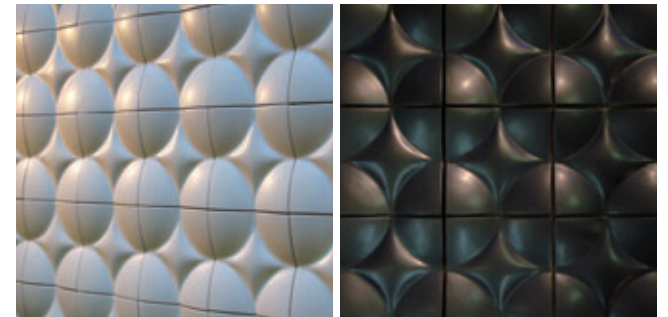
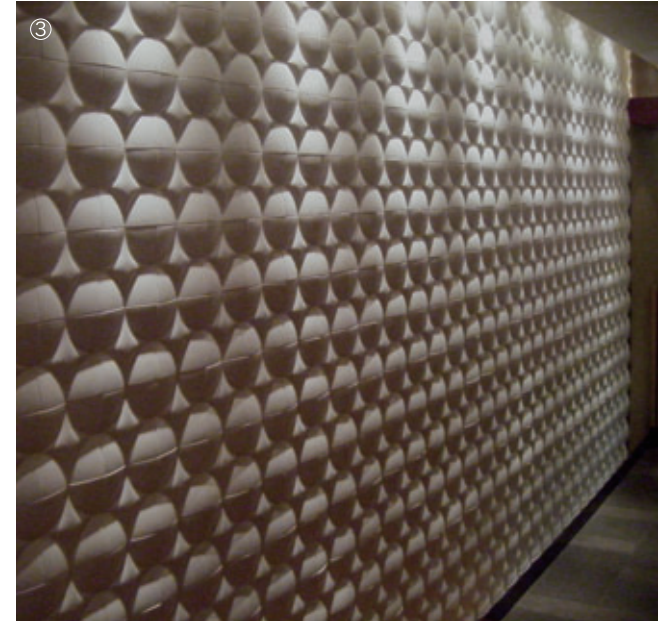
145B-B Charcoal 145S-B Silky White
Round square model B



size:145×145×T22mm



145B-C Charcoal 145S-C Silky White
Round square model C



Round square model B・C

NO.	color	pcs/m ²	size (L×W×T mm)	weight/pc
145S-B	Silky White	43.5 (5mm joint)	145×145×20	500g
145B-B	Charcoal			
145S-C	Silky White	43.5 (5mm joint)	145×145×22	600g
145B-C	Charcoal			

■Ceramic product has individual differences, such as size and color shape.

No.207 classical model

BEAUTY & YOUTH
UNITED ARROWS

size: 125x125xT13mm

size: 125x125xT22mm

size: 125x125xT22mm

Sand



No.207 F



No.207D



No.207E

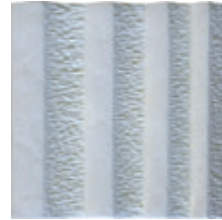
Snow



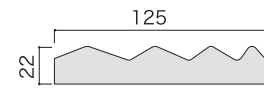
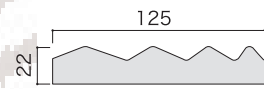
No.207 F



No.207D



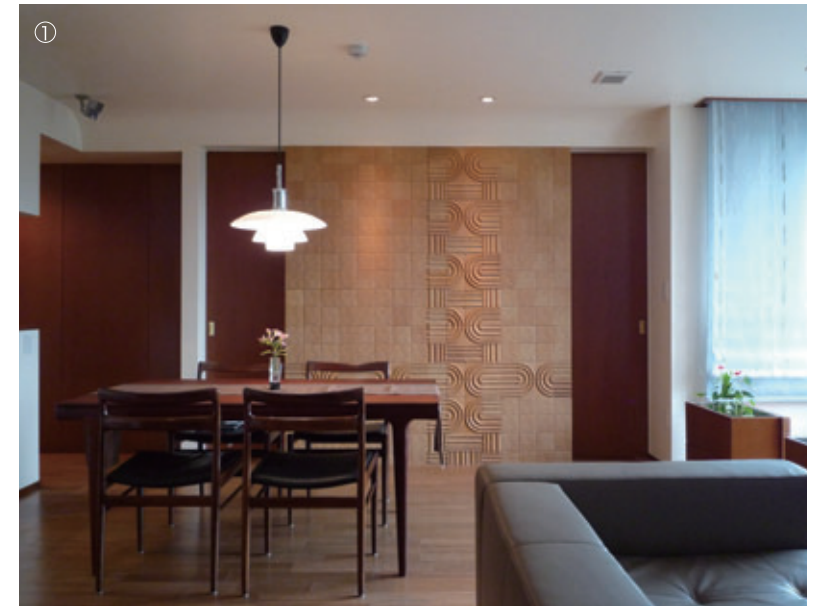
No.207E



No.207

NO.	color	pcs/m ²	size (LxWxT mm)	weight/pc
No.207F	Sand	64	125x125x13	380g
No.207D			125x125x22	460g
No.207E	Snow		125x125x22	460g

■Ceramic product has individual differences, such as size and color shape.



No.1500 classical model

size:155x155

Snow



NO.1500



NO.1503



NO.1513



NO.1514

Sand



NO.1500



NO.1503



NO.1513



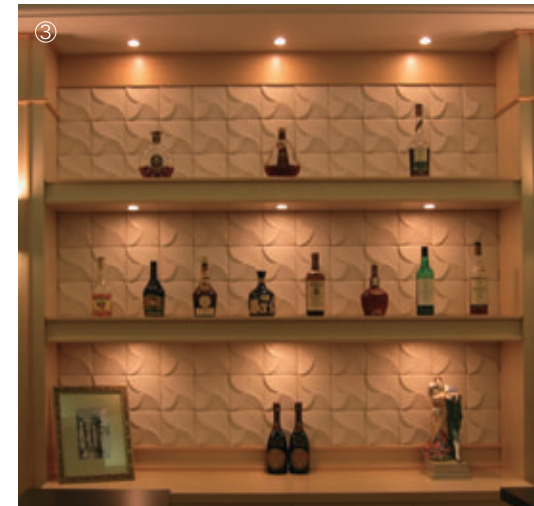
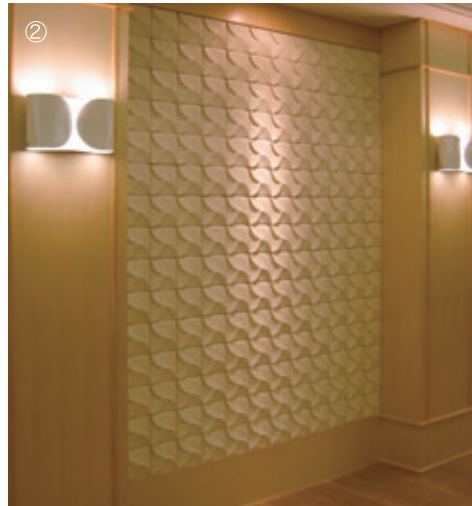
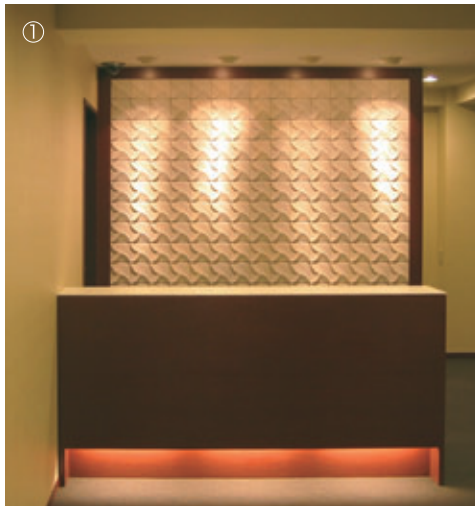
NO.1514



No.1505



設計/GOSIZE

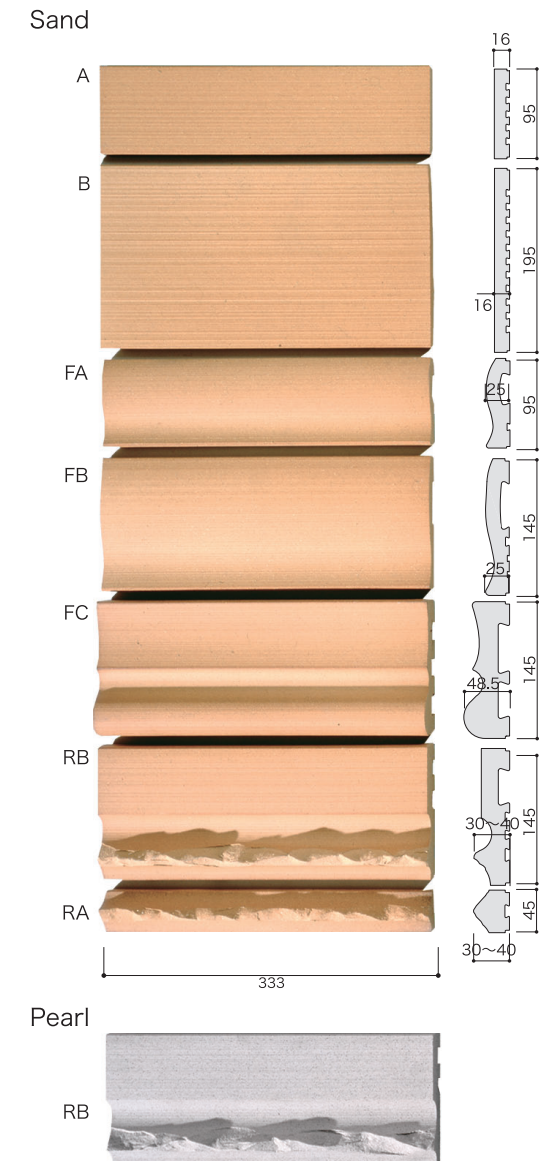


No.1500

NO.	color	pcs/m ²	size (LxWxT mm)	weight/pc
1500	Sand	42	155x155x13	600g
1503 / 1513 / 1514	Snow		155x155x22	700g
1505	Sand			

- Ceramic product has individual differences, such as size and color shape.
- Snow should be careful of the dirt during the installation.

F-relief model



F-relief model

NO.	color	pcs/m ²	size (LxWxT mm)	weight/pc
A	Pearl	30	333x95x16	1000g
B		15	333x195x16	2200g
FA	Sand	30	333x95x25	1300g
FB		20	333x145x25	2000g
FC		20	333x145x48.5	3300g

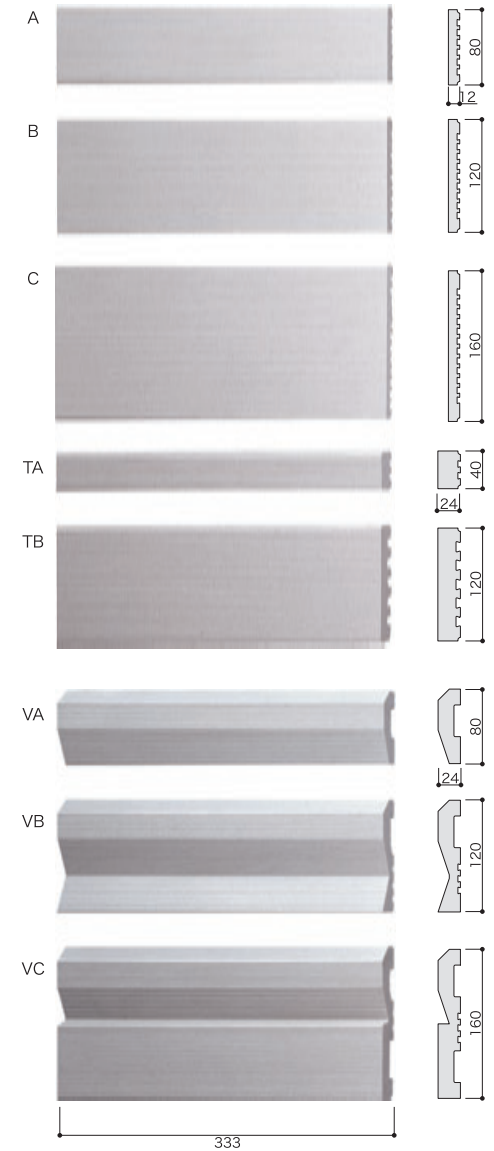
NO.	color	pcs/m ²	size (LxWxT mm)	weight/pc
RA	Pearl	60	333x45x30~40	700g
RB	Sand	20	333x145x30~40	2680g

■Ceramic product has individual differences, such as size and color shape.

M-relief model



Pearl



M-relief model

NO.	color	pcs/m ²	size (LxWxT mm)	weight/pc
A	pearl	38	333x80x12	600g
B		25	333x120x12	920g
C		19	333x160x12	1280g
TA		75	333x40x24	570g
TB		25	333x120x24	1730g

NO.	color	pcs/m ²	size (LxWxT mm)	weight/pc
VA	pearl	38	333x80x24	1040g
VB		25	333x120x24	1500g
VC		19	333x160x24	2280g

■Ceramic product has individual differences, such as size and color shape.

Shell wall model 1

ORIBE CRAFT DESIGN AWARDS HONORABLE MENTION

①



②

③



size:333x50·75·100xT20mm

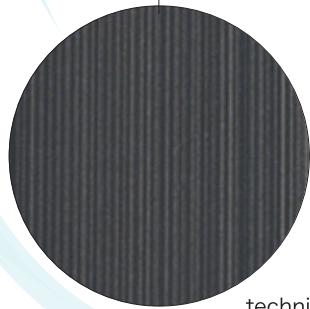
Charcoal



T1-50B

T1-75B

T1-100B



technique only kenzan

size:333x50·75·100xT20mm

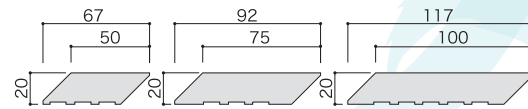
Sand



T1-50H

T1-75H

T1-100H



size:333x50·75·100xT20mm

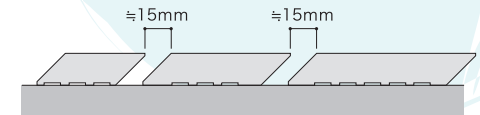
Silky White



T1-50S

T1-75S

T1-100S



Shell wall model 1

NO.	color	pcs/m ²	size (LxWxT mm)	weight/pc
T1-50B	Charcoal	46	333x50x20	627g
T1-75B	Charcoal	33	333x75x20	957g
T1-100B	Charcoal	26	333x100x20	1265g
T1-50H	Sand	46	333x50x20	627g
T1-75H	Sand	33	333x75x20	957g
T1-100H	Sand	26	333x100x20	1265g
T1-50S	Silky White	46	333x50x20	627g
T1-75S	Silky White	33	333x75x20	957g
T1-100S	Silky White	26	333x100x20	1265g

■Ceramic product has individual differences, such as size and color shape.



original point

Other colors are available by special order.



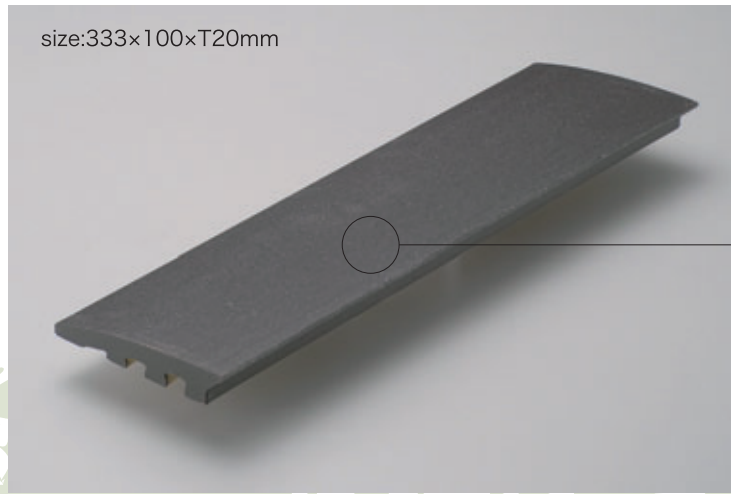
Shell wall model 2

ORIBE CRAFT DESIGN AWARDS HONORABLE MENTION





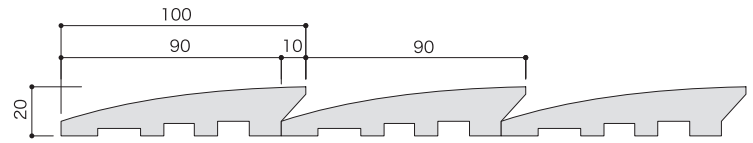
T2-100S(Silky White)



T2-100B(Charcoal)



technique only kenzan



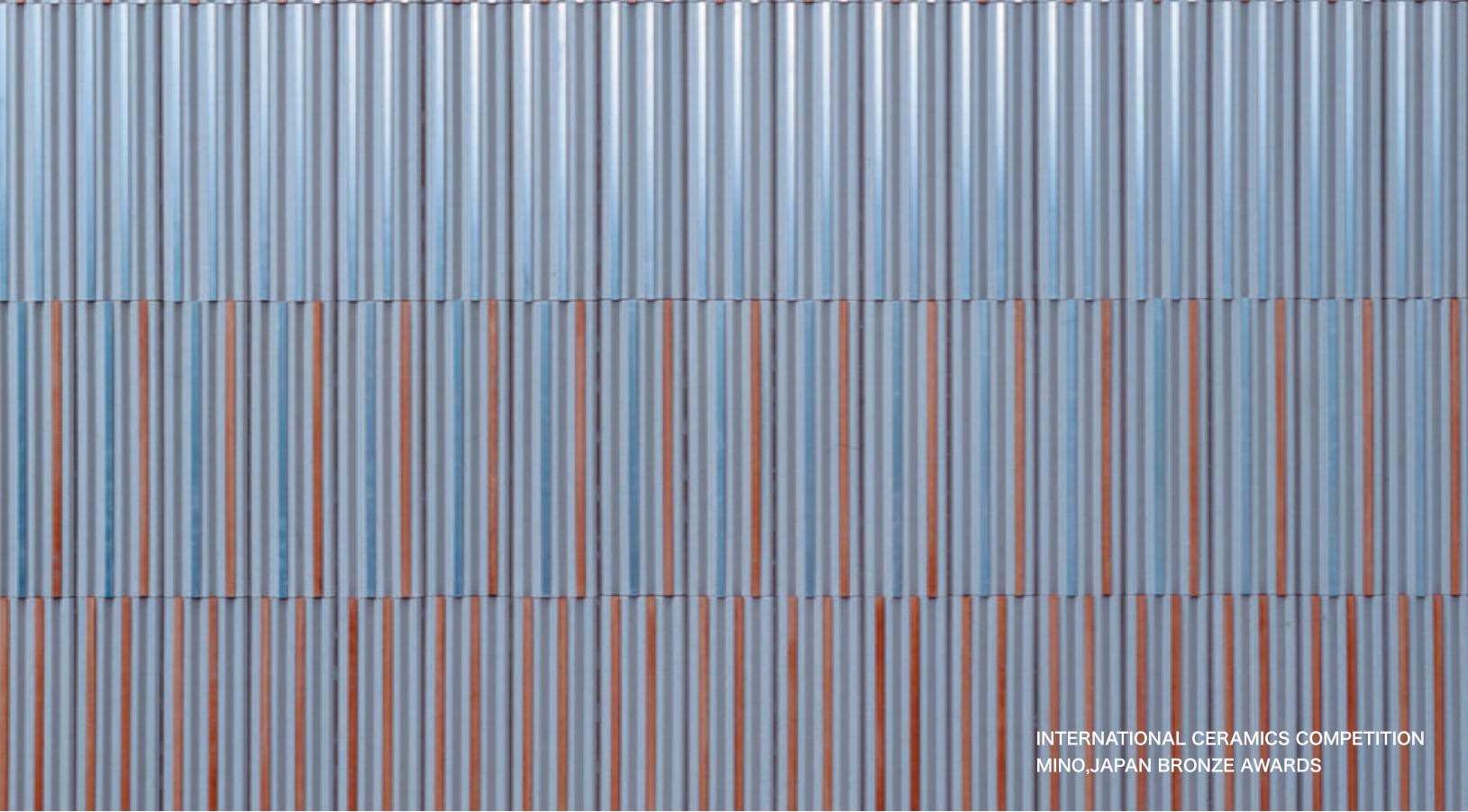
Shell wall model 2

NO.	color	pcs/m ²	size (L×W×T mm)	weight/pc
T2-100S	Silky White	33	333x100x20	814g
T2-100B	Charcoal	33	333x100x20	814g

■Ceramic product has individual differences, such as size and color shape.

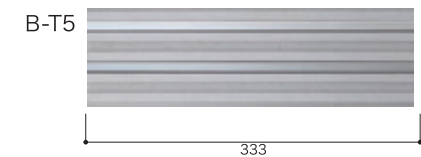


Combination-stripe in stripe model



INTERNATIONAL CERAMICS COMPETITION
MINO, JAPAN BRONZE AWARDS

Pearl 333x100x18

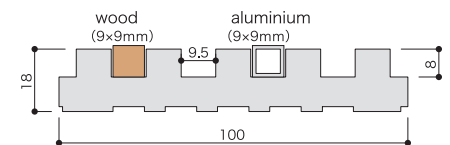


This is complex material with wood, aluminium, etc, on base pattern "B-T".

Combination-stripe in stripe model

NO.	color	pcs/m ²	size (LxWxT mm)	weight/pc
B-H	Pearl	30	333x100x18	1100g
B-T				940g
B-T3	(wood×2)			
B-T4	(aluminium×1·wood×1)			
B-T5	(aluminium×2)			

■Ceramic product has individual differences, such as size and color shape.



General Products Installation Advice

● Product advice

1. Ceramic product has individual differences, such as size and color shade.

Keep some joint during installation in order to absorb the size difference of products.

Joint-less installation is not recommended to make the products line straight. In addition,

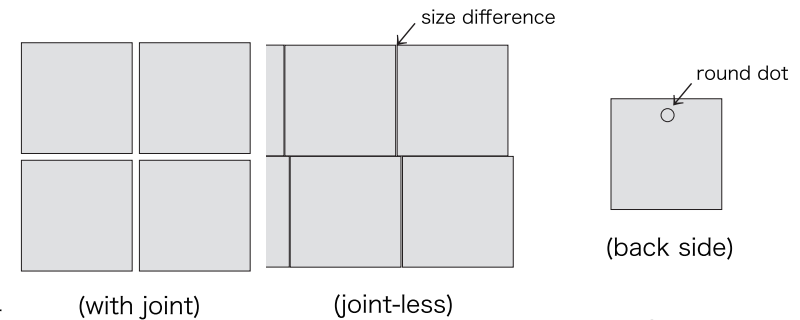
Since joint-less installation cannot absorb the movement of the building frame,

it may cause the product to drop off.

2. Some products** have the guide sign (round dot) on the back side.

Installing products with the round dot in same direction, it will achieve more beautiful result.

(** Round square model A/B/C/mini, Round quarter, Ichimatsu 100, Hana)



● Installation advice ※Elastic adhesive is recommended.

1. Check and adjust the surface condition of the ground work.

① Check the ground work without any float, weak layer, crack, etc.

② Clean up the ground work. (If there are dirt on ground work, it reduces the strength of adhesive.)

③ Dry the ground sufficiently. (If ground work is wet, it reduces the strength of adhesive.)

2. Installation of products

① Apply adhesive in adequate quantity while using a comb trowel.

(Then make flatten depending on situation if needed.)

② Apply only area where you can install before adhesive gets harden.

Products should be installed by rubbing with hand or pressing down by an oscillating tool, etc. before adhesive gets harden.

* One-part adhesive should be used immediately after unsealing, because the humidity in the air makes adhesive get harden easily.

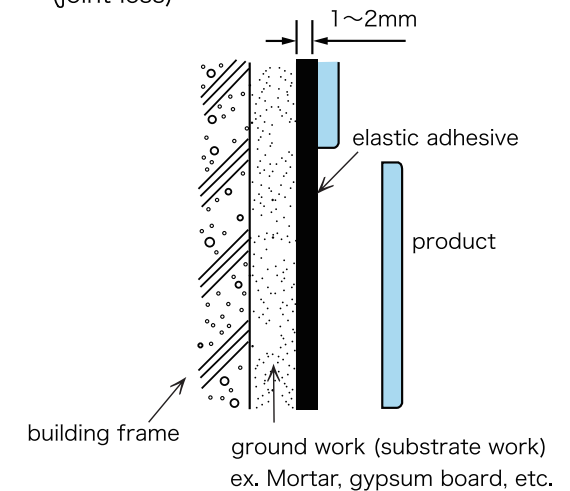
* Two-part adhesive should be mixed appropriately, otherwise, it cannot work well.

③ In order to check how strong the products installed on the ground work, peel off a product occasionally as a test.

(If adhesive covers more than 70% and of products' back side and in even, it is considered OK.)

④ In case adhesive stick to the surface of products, wipe off by soft cloth contained thinner before hardening. At this time,

be careful for not applying thinner to the ground work and not pressing products too much.



【Caution】

* Store products inside and away from rain.

* Do not install under bad conditions such as strong rain, snow, and wind.

* Do not install when temperature is 5°C or less.

Porous Model 1 self-stading type Installation Advice

● PLANNING

Before fixing pillars, check the intervals by placing original pieces side by side.
Ceramic has individual difference in size.

(Horizontal side)

Fix pillars for the hole in the center of product.
Generally the interval of pillars is $148+1-2\text{mm}$ ※ref 《I》
Keep 1-2mm between pieces for size allowance.

(Vertical side)

It differs the patterns such as Pattern A, Pattern C and mixture of Pattern A & C,
but you may find slight gap from your advanced calculation because of the nature of ceramic.
We recommend elastic adhesive for fixing glue.
The number and thickness of flat bars also make difference.
Find any solution to adjust the top of this partition wall for some gap in advance.

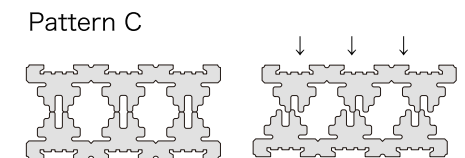
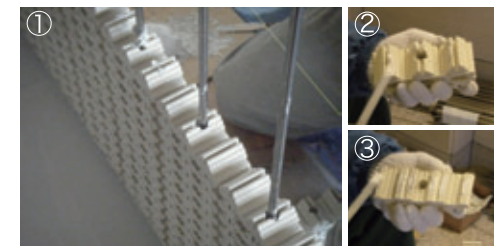
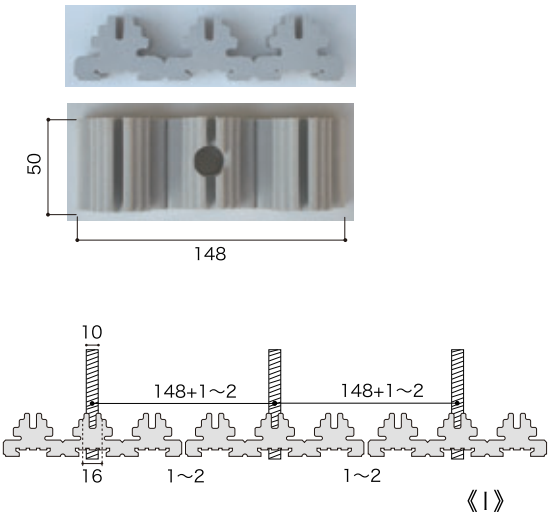
*fix with nuts and washers on top makes the wall solid, please consider depending on the condition of the project site.

● ASSEMBLY

Fix the pillars and set products with the pillars through the holes.
Bond each joint between upper and lower piece and drop bond to the gap between the pillars and holes.
While bonding, be sure to adjust products horizontally and vertically.
Using $\phi 10\text{mm}$ pillars allows your adjustment easily.
(→ holes of product : 16mm, clearance abt 6mm) ※ref ① ② ③
Pile up a lot of pieces before the bond sets, it may cause difficulty to keep horizontal line straight.

We recommend sufficient time to adjust the balance of products.

Be careful for the movement caused by self-weight especially in case of Pattern C ※ref 《II》



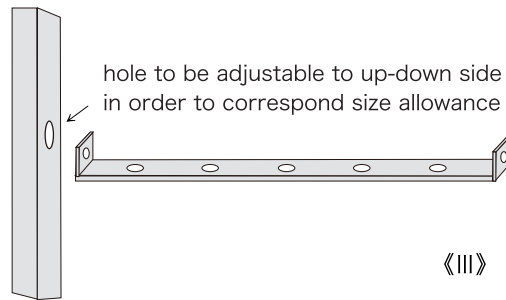
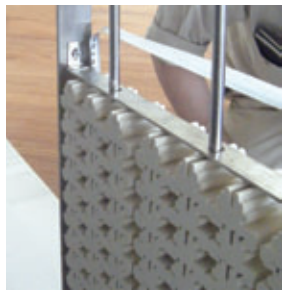
《II》

● **FLAT BAR**

Apply flat bars of 3-5mm thickness.

Every 400-500mm height, apply flat bars horizontally. Fix the flat bars to the frames of both right and left side, it can make flat horizontal level with reducing size gap in addition to enhance the stability of this partition.

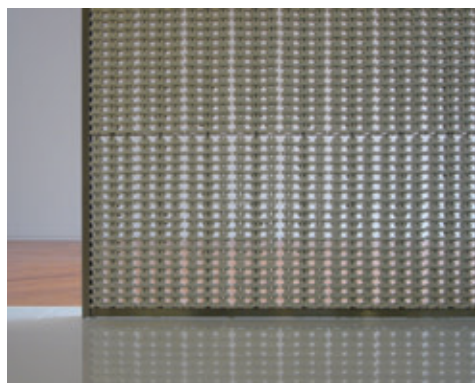
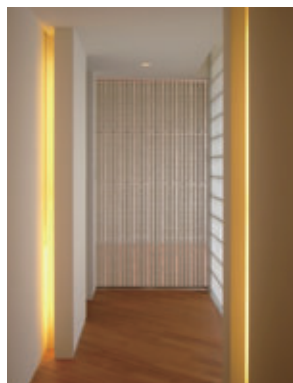
※ref 《III》



● **REINFORCEMENT**

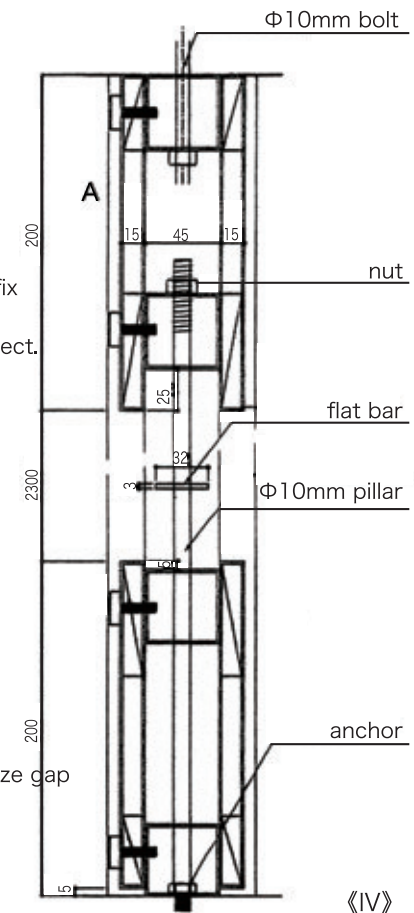
Side frames are required for both right and left side.

Additionally, please consider intermediate frames at every 1500mm horizontal interval.



please consider how to fix the pillars depending on the condition of the project.

adjust the vertical size gap by wall A



Ceramic screen Installation Advice

This is just one reference and not deserved our responsibility for installation. It must be duly considered depending on the condition of the project.

● Fix pillars.

1. Set up pillars (screw type $\phi 12\text{mm}$) and pillar covers.

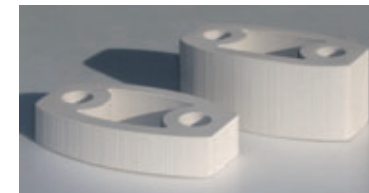
Stand pillars at the interval of the holes in the products.

Generally the interval of the holes is abt 107-108mm.

However due to the nature of ceramic, remember that the interval might be different.

Before fixing, place the products practically and check the intervals to be exactly correct. ※ref 《I》

Precisely stand pillars vertically. If it is not vertical, it should cause trouble as the products are piled up.



ceramic screen A
CS90AS

ceramic screen B
CS90BS

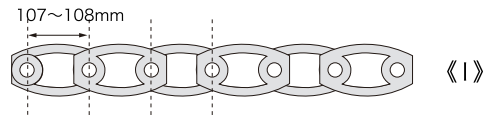


end column A
CS90AST

end column B
CS90BST



shock absorp buffer
(belonging)

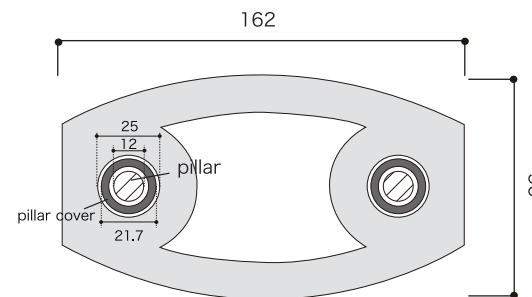
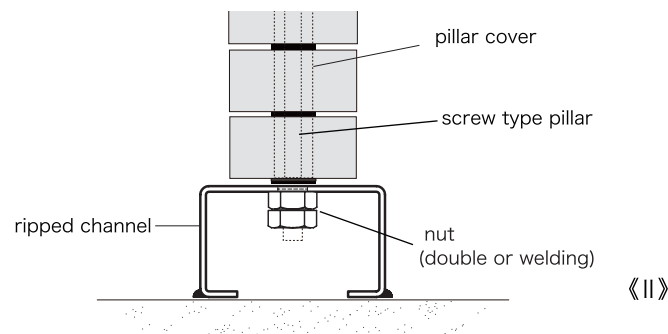


Make holes on the ripped channel or substitution and fix pillars with nuts.

Fix the ripped channel at the bottom of pillars in order to maintain the stability and horizontal line. ※ref 《II》

After fixing pillars, attach pillar covers. Pillar covers should be loose-fitting. ※ref 《III》

Or the pillar covers can be fixed if necessary.



*Supplementary Advice
Roll seal tape at the bottom and top of $\phi 12$ screw pillar. It enhances the stability of $\phi 21.7$ whole pillar.

The followings are the tools to be prepared at each project. (not delivered with products)

(pillars) screw type in appropriate length : $\phi 12\text{mm}$

(pillar covers) equivalent to the followings. We recommend to use material that doesn't become rusty.

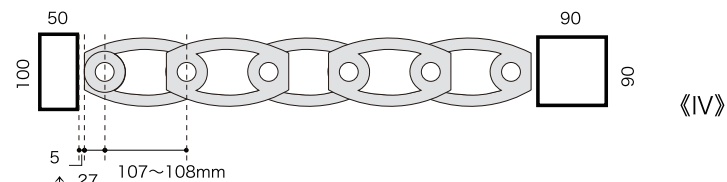
stainless pipe : external diameter 22mm, thickness 1.9mm

steel pipe : external diameter 21.7mm, thickness 1.9mm

2. Stand side frames which maintain the stability.

Recommended size of side frames is abt 90x90mm or abt 50x100mm. ※ref 《IV》

If the screen wall goes wide spread, intermediate frames in every 2,000mm can make the screen stronger.



keep abt 5mm space between product and side frame because ceramic has naturally size difference.

● Assemble the ceramics and buffers alternately.

Columns (CS90AST, CS90BST) are installed at the both side ends.

Shock absorption buffers <material EPDM> are enclosed with products as belonging of product.

While assembling, adjust the products to be exactly horizontal and vertical.

Installing flat bars at the intermediate level enhances the strength of the wall, at same time,

it can enable to adjust horizontal level. ※ref 《V》

Note that flat bars come into the view.

Connect the both side ends of flat bars with frames for reinforcement.

● Secure the stability by fastening the top end.

Fasten the top of the pillars with washer, buffer, and nut with using flat bar. ※ref 《VI》

Pay attention to the horizontal level to be flat while fastening with nuts.

Fasten the nuts until the products get to be difficult to move. (Do not fasten nuts strongly)

Connect the top end with another part which can maintain the stability.

Make your original design around the top of the wall respectively at the project.

Take a clearance especially at the height direction due to the size difference of ceramics.

【Caution】

* Do not install ceramic screen at the places where children want to climb up.

* Contact us before installation if the total height is more than 2,000mm.

* Do not fasten the nuts too strongly since it may be broken.

* This screen wall is not recommended to install without any other stable structures such as side frames or concrete block walls.

